

## Anti-AQP3 antibody (193-292 aa) (STJ11107077)

STJ11107077

### GENERAL INFORMATION

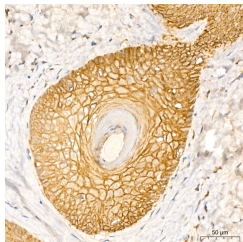
<b>Product Type</b>	Primary antibodies
<b>Short Description</b>	
<b>Applications</b>	IHC-P/ELISA
<b>Host/Source</b>	Rabbit
<b>Reactivity</b>	Human

### PRODUCT PROPERTIES

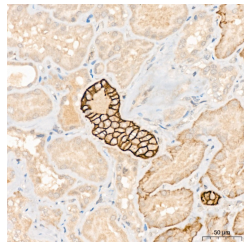
<b>Clonality</b>	Polyclonal
<b>Clone ID</b>	
<b>Concentration</b>	Lot specific
<b>Conjugation</b>	Unconjugated
<b>Purification</b>	Affinity purification
<b>Dilution Range</b>	IHC:1:50-1:200 ELISA:Recommended starting concentration is 1 Mu g/mL. Please optimize the concentration based on your specific assay requirements.
<b>Formulation</b>	PBS with 0.05% Proclin300, 50% Glycerol, pH 7.3.
<b>Isotype</b>	IgG
<b>Storage</b>	
<b>Instruction</b>	

### TARGET INFORMATION

<b>Gene ID</b>	360
<b>Gene Symbol</b>	AQP3
<b>Uniprot ID</b>	AQP3_HUMAN
<b>Immunogen</b>	
<b>Immunogen</b>	193-292 aa
<b>Region</b>	
<b>Specificity</b>	A synthetic peptide corresponding to a sequence within amino acids 193-292 of human AQP3 (NP_004916.1).
<b>Immunogen</b>	FTVGLVVLVIGTSMGFNSGY AVNPARDFGPRLFTALAGWG SAVFTTGQHWWWVPIVSPLL GSIAGVFYQLMIGCHLEQP
<b>Sequence</b>	PPSNEEENVKLAHVKHKEQI



Immunohistochemistry analysis of AQP3 in paraffin-embedded human skin tissue using AQP3 Rabbit pAbA (STJ11107077) at a dilution of 1:200 (40x lens). A high pressure antigen retrieval was performed with 0.01 M citrate buffer (pH 6.0) prior to immunohistochemistry staining.



Immunohistochemistry analysis of AQP3 in paraffin-embedded human kidney tissue using AQP3 Rabbit pAbA (STJ11107077) at a dilution of 1:200 (40x lens). A high pressure antigen retrieval was performed with 0.01 M citrate buffer (pH 6.0) prior to immunohistochemistry staining.