

Anti-ZIP8 antibody (201-300 aa) (STJ11107072)

STJ11107072

GENERAL INFORMATION

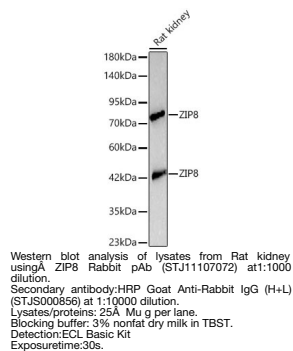
Product Type	Primary antibodies
Short Description	
Applications	WB/ELISA
Host/Source	Rabbit
Reactivity	Rat

PRODUCT PROPERTIES

Clonality	Polyclonal
Clone ID	
Concentration	Lot specific
Conjugation	Unconjugated
Purification	Affinity purification
Dilution Range	WB:1:500-1:1000 ELISA:Recommended starting concentration is 1 Mu g/mL. Please optimize the concentration based on your specific assay requirements.
Formulation	PBS with 0.05% Proclin300, 50% Glycerol, pH 7.3.
Isotype	IgG
Storage	
Instruction	

TARGET INFORMATION

Gene ID	64116
Gene Symbol	SLC39A8
Uniprot ID	S39A8_HUMAN
Immunogen	
Immunogen Region	201-300 aa
Specificity	A synthetic peptide corresponding to a sequence within amino acids 201-300 of human ZIP8 (NP_071437.3).
Immunogen Sequence	AVFGGFYLLFFFERMLKMLL KTYGQNGHTHFGNDNFGPQE KTHQPKALPAINGVTCYANP AVTEANGHIIHFDNVSIVSLQ DGGKEPSSCTCLKGPKLSEI



This product is suitable for in-vitro studies under the RESEARCH USE ONLY [RUO] licence. This product must not be used as for diagnostic or other medical purposes.
St John's Laboratory Ltd, Knowledge Dock Business Centre, University Way, London, E16 2RD | Tel: 0208 223 3081