

Anti-YBEY antibody (68-167 aa) (STJ11107071)

STJ11107071

GENERAL INFORMATION

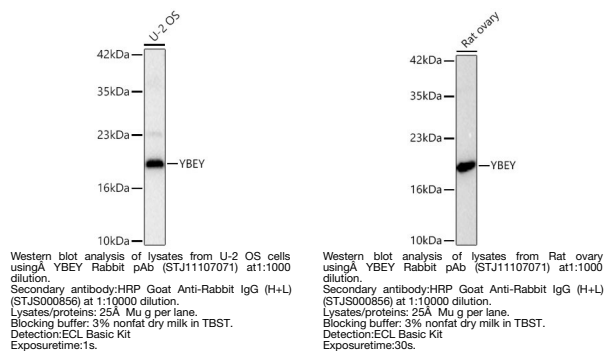
Product Type	Primary antibodies
Short Description	
Applications	WB/ELISA
Host/Source	Rabbit
Reactivity	Human/Rat

PRODUCT PROPERTIES

Clonality	Polyclonal
Clone ID	
Concentration	Lot specific
Conjugation	Unconjugated
Purification	Affinity purification
Dilution Range	WB:1:500-1:1000 ELISA:Recommended starting concentration is 1 Mu g/mL. Please optimize the concentration based on your specific assay requirements.
Formulation	PBS with 0.05% Proclin300, 50% Glycerol, pH 7.3.
Isotype	IgG
Storage	
Instruction	

TARGET INFORMATION

Gene ID	54059
Gene Symbol	YBEY
Uniprot ID	YBEY_HUMAN
Immunogen	
Immunogen Region	68-167 aa
Specificity	A synthetic peptide corresponding to a sequence within amino acids 68-167 of human YBEY (NP_478061.1).
Immunogen Sequence	FHEHLKAGEFPQDPDPDDYN LGDIFLGEYIFHQCKENED YNDVLTVTATHGLCHLLGFT HGTEAEWQQMFQKEKAVLDE LGRRTGTRLQPLTRGLFGGS



This product is suitable for in-vitro studies under the RESEARCH USE ONLY [RUO] licence. This product must not be used as for diagnostic or other medical purposes.
St John's Laboratory Ltd, Knowledge Dock Business Centre, University Way, London, E16 2RD | Tel: 0208 223 3081