

## Anti-PLIN5 antibody (302-401 aa) (STJ11107068)

STJ11107068

### GENERAL INFORMATION

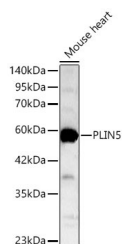
<b>Product Type</b>	Primary antibodies
<b>Short Description</b>	
<b>Applications</b>	WB/ELISA
<b>Host/Source</b>	Rabbit
<b>Reactivity</b>	Mouse/Rat

### PRODUCT PROPERTIES

<b>Clonality</b>	Polyclonal
<b>Clone ID</b>	
<b>Concentration</b>	Lot specific
<b>Conjugation</b>	Unconjugated
<b>Purification</b>	Affinity purification
<b>Dilution Range</b>	WB:1:500-1:1000 ELISA:Recommended starting concentration is 1 $\mu$ g/mL. Please optimize the concentration based on your specific assay requirements.
<b>Formulation</b>	PBS with 0.05% Proclin300, 50% Glycerol, pH 7.3.
<b>Isotype</b>	IgG
<b>Storage Instruction</b>	

### TARGET INFORMATION

<b>Gene ID</b>	440503
<b>Gene Symbol</b>	PLIN5
<b>Uniprot ID</b>	PLIN5_HUMAN
<b>Immunogen</b>	
<b>Immunogen</b>	302-401 aa
<b>Region</b>	
<b>Specificity</b>	A synthetic peptide corresponding to a sequence within amino acids 302-401 of human PLIN5 (NP_001013728.2).
<b>Immunogen</b>	ESSVRGLPAGAEKVAEVR SVDALQTAFADARCFRDVPA AALAEGRGRVAHAHACVDEL LELVVQAVPLPWLVPFPAPI
<b>Sequence</b>	LVERPEPLPDLADLVDEVG



Western blot analysis of lysates from Mouse heart using Anti-PLIN5 Rabbit pAb (STJ11107068) at 1:1000 dilution.  
Secondary antibody:HRP Goat Anti-Rabbit IgG (H+L) (STJ5000856) at 1:10000 dilution.  
Lysates/proteins: 25  $\mu$ g per lane.  
Blocking buffer: 3% nonfat dry milk in TBST.  
Detection:ECL Basic Kit  
Exposure time:1s.

This product is suitable for in-vitro studies under the RESEARCH USE ONLY [RUO] licence. This product must not be used as for diagnostic or other medical purposes.  
St John's Laboratory Ltd, Knowledge Dock Business Centre, University Way, London, E16 2RD | Tel: 0208 223 3081