

Anti-HOMER1 antibody (71-170 aa) (STJ11107067)

STJ11107067

GENERAL INFORMATION

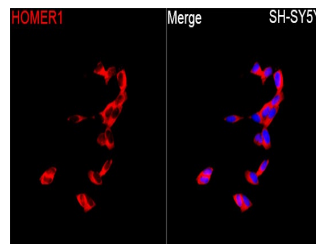
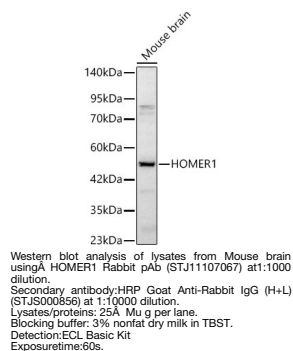
Product Type	Primary antibodies
Short Description	
Applications	WB/IF/ICC/ELISA
Host/Source	Rabbit
Reactivity	Human/Mouse

PRODUCT PROPERTIES

Clonality	Polyclonal
Clone ID	
Concentration	Lot specific
Conjugation	Unconjugated
Purification	Affinity purification
Dilution Range	WB:1:500-1:1000 IF/ICC:1:50-1:200 ELISA:Recommended starting concentration is 1 Mu g/mL. Please optimize the concentration based on your specific assay requirements.
Formulation	PBS with 0.05% Proclin300, 50% Glycerol, pH 7.3.
Isotype	IgG
Storage	
Instruction	

TARGET INFORMATION

Gene ID	9456
Gene Symbol	HOMER1
Uniprot ID	HOME1_HUMAN
Immunogen	
Immunogen Region	71-170 aa
Specificity	A synthetic peptide corresponding to a sequence within amino acids 71-170 of human HOMER1 (NP_004263.1).
Immunogen Sequence	SQKFGQWADSRANTVYGLGF SSEHHLSKFAEKQFEKAA RLAKEKSQEKMELTSTPSQE SAGGDLQSP LTPESINGTDD ERTPDVTQNSEPRAEPTQNA



This product is suitable for in-vitro studies under the RESEARCH USE ONLY [RUO] licence. This product must not be used as for diagnostic or other medical purposes.
St John's Laboratory Ltd, Knowledge Dock Business Centre, University Way, London, E16 2RD | Tel: 0208 223 3081