

## Anti-CYP1A1 antibody (261-360 aa) (STJ11107065)

STJ11107065

### GENERAL INFORMATION

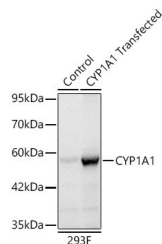
<b>Product Type</b>	Primary antibodies
<b>Short Description</b>	
<b>Applications</b>	WB/IHC-P/IF/CC/ELISA
<b>Host/Source</b>	Rabbit
<b>Reactivity</b>	Human/Mouse/Rat

### PRODUCT PROPERTIES

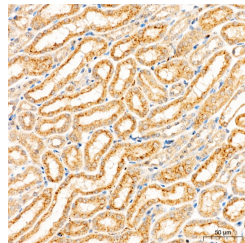
<b>Clonality</b>	Polyclonal
<b>Clone ID</b>	
<b>Concentration</b>	Lot specific
<b>Conjugation</b>	Unconjugated
<b>Purification</b>	Affinity purification
<b>Dilution Range</b>	WB:1:500-1:1000 IHC:1:50-1:200 IF/CC:1:50-1:200 ELISA:Recommended starting concentration is 1 µg/mL. Please optimize the concentration based on your specific assay requirements.
<b>Formulation</b>	PBS with 0.09% Sodium Azide, 50% Glycerol, pH 7.3.
<b>Isotype</b>	IgG
<b>Storage Instruction</b>	

### TARGET INFORMATION

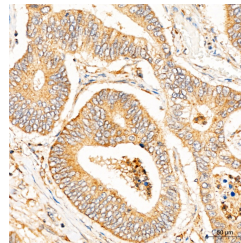
<b>Gene ID</b>	1543
<b>Gene Symbol</b>	CYP1A1
<b>Uniprot ID</b>	CP1A1_HUMAN
<b>Immunogen</b>	
<b>Immunogen Region</b>	261-360 aa
<b>Specificity</b>	A synthetic peptide corresponding to a sequence within amino acids 261-360 of human CYP1A1 (NP_000490.1).
<b>Immunogen Sequence</b>	FMQKMVKEHYKTFEKGHIRD ITDSLIEHCQEQLDENANV QLSDEKIINIVLDLFGAGFD TVTTAISWSLMYLVMPRVQ RKIQEELDTVIGRSRRPRLS



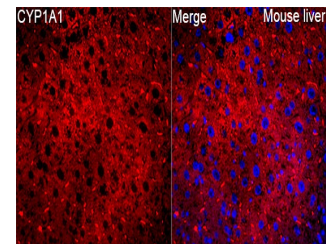
Western blot analysis of lysates from wild type (WT) and 293F cells transfected with CYP1A1 using CYP1A1 Rabbit pAb (STJ11107065) at 1:1000 dilution incubated overnight at 4°C. Secondary antibody: HRP-conjugated Goat anti-Rabbit IgG (H+L) (STJ5000856) at 1:10000 dilution. Lysates/proteins: 25 µg per lane. Blocking buffer: 3% nonfat dry milk in TBST. Detection: ECL Basic Kit (Exposure time: 1s).



Immunohistochemistry analysis of paraffin-embedded Mouse kidney tissue using CYP1A1 Rabbit pAb (STJ11107065) at a dilution of 1:200 (40x lens). High pressure antigen retrieval performed with 0.01M Citrate Buffer (pH 6.0) prior to immunohistochemistry staining.



Immunohistochemistry analysis of paraffin-embedded Human colon carcinoma tissue using CYP1A1 Rabbit pAb (STJ11107065) at a dilution of 1:200 (40x lens). High pressure antigen retrieval performed with 0.01M Citrate Buffer (pH 6.0) prior to immunohistochemistry staining.



Immunofluorescence analysis of Mouse liver tissue using CYP1A1 Rabbit pAb (STJ11107065) at a dilution of 1:200 (40x lens). Secondary antibody: Cy3-conjugated Goat anti-Rabbit IgG (H+L) (STJ5001166) at 1:500 dilution. Blue: DAPI for nuclear staining. High pressure antigen retrieval performed with 0.01M Citrate Buffer (pH 6.0) prior to IF staining.

This product is suitable for in-vitro studies under the RESEARCH USE ONLY [RUO] licence. This product must not be used as for diagnostic or other medical purposes.  
St John's Laboratory Ltd, Knowledge Dock Business Centre, University Way, London, E16 2RD | Tel: 0208 223 3081