

**Anti-FBXO32 antibody (201-300 aa) (STJ11107064)**  
STJ11107064

**GENERAL INFORMATION**

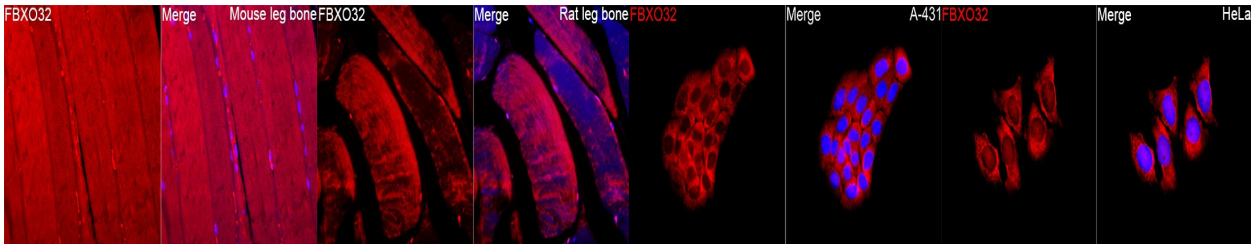
<b>Product Type</b>	Primary antibodies
<b>Short Description</b>	
<b>Applications</b>	IF/ICC/ELISA
<b>Host/Source</b>	Rabbit
<b>Reactivity</b>	Human/Mouse/Rat

**PRODUCT PROPERTIES**

<b>Clonality</b>	Polyclonal
<b>Clone ID</b>	
<b>Concentration</b>	Lot specific
<b>Conjugation</b>	Unconjugated
<b>Purification</b>	Affinity purification
<b>Dilution Range</b>	IF/ICC:1:50-1:200 ELISA:Recommended starting concentration is 1 Mu g/mL. Please optimize the concentration based on your specific assay requirements.
<b>Formulation</b>	PBS with 0.09% Sodium Azide, 50% Glycerol, pH 7.3.
<b>Isotype</b>	IgG
<b>Storage Instruction</b>	

**TARGET INFORMATION**

<b>Gene ID</b>	114907
<b>Gene Symbol</b>	FBXO32
<b>Uniprot ID</b>	FBX32_HUMAN
<b>Immunogen</b>	
<b>Immunogen</b>	201-300 aa
<b>Region</b>	
<b>Specificity</b>	A synthetic peptide corresponding to a sequence within amino acids 201-300 of human FBXO32 (NP_478136.1).
<b>Immunogen</b>	ETILHWQQQLNNIQITRPAF KGLTFTDLPLCLQLNMQRL SDGRDLVSLGQAAPDLHVLV EDRLWKKLCQYHFSEKQIR
<b>Sequence</b>	KRLILSDKGQLDWKKMYFKL



Immunofluorescence analysis of Mouse leg bone tissue using FBXO32 Rabbit pAb (STJ11107064) at a dilution of 1:100 (40x lens). Secondary antibody: Cy3-conjugated Goat anti-Rabbit IgG (H+L) (STJS001166) at 1:500 dilution. Blue: DAPI for nuclear staining. High pressure antigen retrieval performed with 0. 01M Citrate Buffer (pH 6. 0) prior to IF staining.

Immunofluorescence analysis of Rat leg bone tissue using FBXO32 Rabbit pAb (STJ11107064) at a dilution of 1:100 (40x lens). Secondary antibody: Cy3-conjugated Goat anti-Rabbit IgG (H+L) (STJS001166) at 1:500 dilution. Blue: DAPI for nuclear staining. High pressure antigen retrieval performed with 0. 01M Citrate Buffer (pH 6. 0) prior to IF staining.

Immunofluorescence analysis of A-431 cells using FBXO32 Rabbit pAb (STJ11107064) at a dilution of 1:100 (40x lens). Secondary antibody: Cy3-conjugated Goat anti-Rabbit IgG (H+L) (STJS001166) at 1:500 dilution. Blue: DAPI for nuclear staining.

Immunofluorescence analysis of HeLa cells using FBXO32 Rabbit pAb (STJ11107064) at a dilution of 1:100 (40x lens). Secondary antibody: Cy3-conjugated Goat anti-Rabbit IgG (H+L) (STJS001166) at 1:500 dilution. Blue: DAPI for nuclear staining.

This product is suitable for in-vitro studies under the RESEARCH USE ONLY [RUO] licence. This product must not be used as for diagnostic or other medical purposes.  
St John's Laboratory Ltd, Knowledge Dock Business Centre, University Way, London, E16 2RD | Tel: 0208 223 3081