

Anti-CAT1 antibody (200-300 aa) (STJ11107042)

STJ11107042

GENERAL INFORMATION

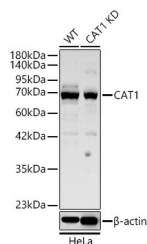
Product Type	Primary antibodies
Short Description	
Applications	WB/ELISA
Host/Source	Rabbit
Reactivity	Human/Mouse

PRODUCT PROPERTIES

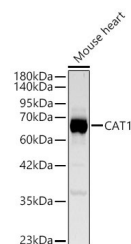
Clonality	Polyclonal
Clone ID	
Concentration	Lot specific
Conjugation	Unconjugated
Purification	Affinity purification
Dilution Range	WB:1:500-1:1000 ELISA:Recommended starting concentration is 1 Mu g/mL. Please optimize the concentration based on your specific assay requirements.
Formulation	PBS with 0.05% Proclin300, 50% Glycerol, pH 7.3.
Isotype	IgG
Storage Instruction	

TARGET INFORMATION

Gene ID	6541
Gene Symbol	SLC7A1
Uniprot ID	CTR1_HUMAN
Immunogen	
Immunogen	200-300 aa
Region	
Specificity	A synthetic peptide corresponding to a sequence within amino acids 200-300 of human SLC7A1 (NP_003036.1).
Immunogen	VLGFIMVSGFVKGSVKNWQL TEEDFGNTSGRLCLNNDTKE GKPGVGGFMPFGSGVLSGA ATCFYAFVGFDCIATTGEEV
Sequence	KNPQKAIPVGIVASLLICFI A



Western blot analysis of lysates from wild type (WT) and CAT1 knockdown (KD) A HeLa cells using a [KD Validated] CAT1 Rabbit pAb (STJ11107042) at 1:1000 dilution.
Secondary antibody: HRP-conjugated Goat anti-Rabbit IgG (H+L) (STJS000856) at 1:10000 dilution.
Lysates/proteins: 17A Mu g per lane.
Blocking buffer: 3% nonfat dry milk in TBST.
Detection: ECL Basic Kit
Exposure time: 20s.



Western blot analysis of lysates from Mouse heart using a [KD Validated] CAT1 Rabbit pAb (STJ11107042) at 1:1000 dilution.
Secondary antibody: HRP-conjugated Goat anti-Rabbit IgG (H+L) (STJS000856) at 1:10000 dilution.
Lysates/proteins: 25A Mu g per lane.
Blocking buffer: 3% nonfat dry milk in TBST.
Detection: ECL Basic Kit
Exposure time: 20s.

This product is suitable for in-vitro studies under the RESEARCH USE ONLY [RUO] licence. This product must not be used as for diagnostic or other medical purposes.
St John's Laboratory Ltd, Knowledge Dock Business Centre, University Way, London, E16 2RD | Tel: 0208 223 3081