

Anti-LXR beta/NER antibody (1-100 aa) (STJ11107035)

STJ11107035

GENERAL INFORMATION

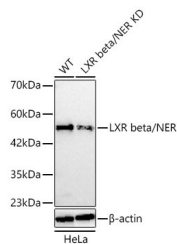
Product Type	Primary antibodies
Short Description	
Applications	WB/ELISA
Host/Source	Rabbit
Reactivity	Human

PRODUCT PROPERTIES

Clonality	Polyclonal
Clone ID	
Concentration	Lot specific
Conjugation	Unconjugated
Purification	Affinity purification
Dilution Range	WB:1:500-1:1000 ELISA:Recommended starting concentration is 1 Mu g/mL. Please optimize the concentration based on your specific assay requirements.
Formulation	PBS with 0.05% Proclin300, 50% Glycerol, pH 7.3.
Isotype	IgG
Storage	
Instruction	

TARGET INFORMATION

Gene ID	7376
Gene Symbol	NR1H2
Uniprot ID	NR1H2_HUMAN
Immunogen	
Immunogen Region	1-100 aa
Specificity	A synthetic peptide corresponding to a sequence within amino acids 1-100 of human LXR beta/NER (NP_009052.4).
Immunogen Sequence	MSSPTTSSLDTPLPGNGPPQ PGAPSSSPTVKEEGPEPWPG GPDPDVPGTDEASSACSTDW VIPDPEEEPERKRRKKGPAPK MLGHELRCVCGDKASGFHYN



Western blot analysis of lysates from wild type (WT) and LXR beta/NER knockdown (KD) HeLa cells using A [KD Validated] LXR beta/NER Rabbit pAb (STJ11107035) at 1:1000 dilution.
Secondary antibody: HRP-conjugated Goat anti-Rabbit IgG (H+L) (STJS000856) at 1:10000 dilution.
Lysates/proteins: 25A 1mu g per lane.
Blocking buffer: 3% nonfat dry milk in TBST.
Detection: ECL Basic Kit
Exposure time: A 60s.

This product is suitable for in-vitro studies under the RESEARCH USE ONLY [RUO] licence. This product must not be used as for diagnostic or other medical purposes.
St John's Laboratory Ltd, Knowledge Dock Business Centre, University Way, London, E16 2RD | Tel: 0208 223 3081