

## Anti-MRPL27 antibody (49-148 aa) (STJ11107034)

STJ11107034

### GENERAL INFORMATION

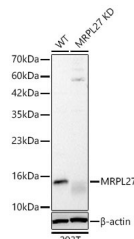
<b>Product Type</b>	Primary antibodies
<b>Short Description</b>	
<b>Applications</b>	WB/IHC-P/ELISA
<b>Host/Source</b>	Rabbit
<b>Reactivity</b>	Human/Mouse

### PRODUCT PROPERTIES

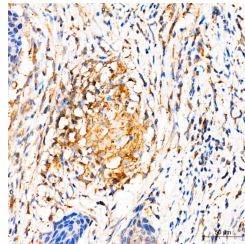
<b>Clonality</b>	Polyclonal
<b>Clone ID</b>	
<b>Concentration</b>	Lot specific
<b>Conjugation</b>	Unconjugated
<b>Purification</b>	Affinity purification
<b>Dilution Range</b>	WB:1:500-1:1000 IHC-P:1:50-1:200 ELISA:Recommended starting concentration is 1 Mu g/mL. Please optimize the concentration based on your specific assay requirements.
<b>Formulation</b>	PBS with 0.05% Proclin300, 50% Glycerol, pH 7.3.
<b>Isotype</b>	IgG
<b>Storage Instruction</b>	

### TARGET INFORMATION

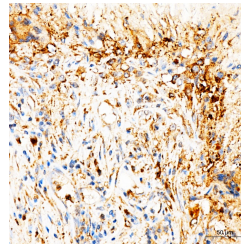
<b>Gene ID</b>	51264
<b>Gene Symbol</b>	MRPL27
<b>Uniprot ID</b>	RM27_HUMAN
<b>Immunogen</b>	
<b>Immunogen Region</b>	49-148 aa
<b>Specificity</b>	A synthetic peptide corresponding to a sequence within amino acids 49-148 of human MRPL27 (NP_057588.1).
<b>Immunogen Sequence</b>	RRQGIKKMEGHYVHAGNIIA TQRHFRWHPGAHVGVGKNKC LYALEEGIVRYTKEVYVPHR RNTEAVDLITRLPKGAVLYK TFFVHWPAKPEGTFKLVAML



Western blot analysis of lysates from wild type (WT) and MRPL27 knockdown (KD) 293T cells using a [KD Validated] MRPL27 Rabbit pAb (STJ11107034) at 1:1000 dilution. Secondary antibody: HRP-conjugated Goat anti-Rabbit IgG (H+L) (STJS000856) at 1:10000 dilution. Lysates/proteins: 25 µg per lane. Blocking buffer: 3% nonfat dry milk in TBST. Detection: ECL Basic Kit. Exposure time: 60s.



Immunohistochemistry analysis of paraffin-embedded human cervical squamous cell carcinoma tissue using a [KD Validated] MRPL27 Rabbit pAb (STJ11107034) at a dilution of 1:100 (40x lens). A High pressure antigen retrieval was performed with 0.01 M citrate buffer (pH 6.0) prior to immunohistochemistry staining.



Immunohistochemistry analysis of paraffin-embedded human liver cancer tissue using a [KD Validated] MRPL27 Rabbit pAb (STJ11107034) at a dilution of 1:100 (40x lens). A High pressure antigen retrieval was performed with 0.01 M citrate buffer (pH 6.0) prior to immunohistochemistry staining.