

Anti-NEUROD1 antibody (1-136 aa) (STJ11107005)
STJ11107005

GENERAL INFORMATION

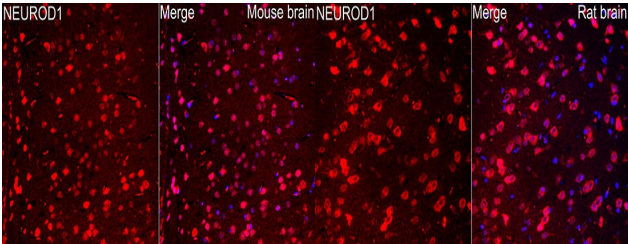
| | |
|--------------------------|--------------------|
| Product Type | Primary antibodies |
| Short Description | |
| Applications | IF/ICC/ELISA |
| Host/Source | Rabbit |
| Reactivity | Mouse/Rat |

PRODUCT PROPERTIES

| | |
|----------------------|---|
| Clonality | Polyclonal |
| Clone ID | |
| Concentration | Lot specific |
| Conjugation | Unconjugated |
| Purification | Affinity purification |
| Dilution | IF/ICC:1:50-1:200 |
| Range | ELISA:Recommended starting concentration is 1 µg/mL. Please optimize the concentration based on your specific assay requirements. |
| Formulation | PBS with 0.05% Proclin300, 50% Glycerol, pH 7.3. |
| Isotype | IgG |
| Storage | |
| Instruction | |

TARGET INFORMATION

| | |
|---------------------------|--|
| Gene ID | 4760 |
| Gene Symbol | NEUROD1 |
| Uniprot ID | NDF1_HUMAN |
| Immunogen | |
| Immunogen Region | 1-136 aa |
| Specificity | Recombinant fusion protein containing a sequence corresponding to amino acids 1-136 of human NEUROD1 (NP_002491.2). MTKSYSESGLMGEPQPGPP SWTDECLSSQDEEHEADKKE DDLETMNAEEDSLRNGGEEE DEDEDLEEEEEEEEEEDDDQK |
| Immunogen Sequence | PKRRGPKKKMTKARLERFK LRRMKANARERNRMHGLNAA LDNLRKVPCYSKTQK |



Immunofluorescence analysis of paraffin-embedded mouse brain using NEUROD1 Rabbit pAb (STJ11107005) at dilution of 1:50 (40x lens). Secondary antibody: Cy3 Goat Anti-Rabbit IgG (H+L) (STJ5001166) at 1:500 dilution. Blue: DAPI for nuclear staining. Perform microwave antigen retrieval with 0.01M citrate buffer (pH 6.0) prior to IF staining.

Immunofluorescence analysis of paraffin-embedded rat brain using NEUROD1 Rabbit pAb (STJ11107005) at dilution of 1:50 (40x lens). Secondary antibody: Cy3 Goat Anti-Rabbit IgG (H+L) (STJ5001166) at 1:500 dilution. Blue: DAPI for nuclear staining. Perform microwave antigen retrieval with 0.01M citrate buffer (pH 6.0) prior to IF staining.

This product is suitable for in-vitro studies under the RESEARCH USE ONLY [RUO] licence. This product must not be used as for diagnostic or other medical purposes.
St John's Laboratory Ltd, Knowledge Dock Business Centre, University Way, London, E16 2RD | Tel: 0208 223 3081