

Anti-STIM1 antibody (530-685 aa) [SRM] (STJ11106983)

STJ11106983

GENERAL INFORMATION

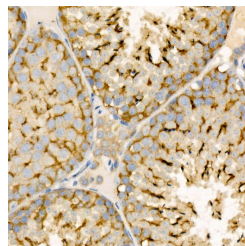
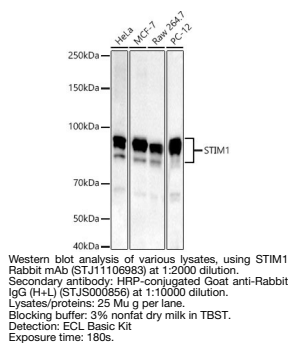
Product Type	Primary antibodies
Short Description	
Applications	WB/IHC-P/ELISA
Host/Source	Rabbit
Reactivity	Human/Mouse/Rat

PRODUCT PROPERTIES

Clonality	Monoclonal
Clone ID	SRM
Concentration	Lot specific
Conjugation	Unconjugated
Purification	Affinity purification
Dilution	WB:1:1000-1:5000
Range	IHC-P:1:50-1:200
	ELISA:Recommended starting concentration is 1 Mu g/mL. Please optimize the concentration based on your specific assay requirements.
Formulation	PBS with 0.05% Proclin300, 0.05% BSA, 50% Glycerol, pH 7.3.
Isotype	IgG
Storage	
Instruction	

TARGET INFORMATION

Gene ID	6786
Gene Symbol	STIM1
Uniprot ID	STIM1_HUMAN
Immunogen	
Immunogen Region	530-685 aa
Specificity	Recombinant fusion protein containing a sequence corresponding to amino acids 530-685 of human STIM1 (NP_003147.2).
Immunogen Sequence	RQRVAPKPPQMSRAADEALN AMTSNGSHRLIEGVHPGSLV EKLDPSPALAKKALLALNHG LDKAHSMLMELSPSAPPGGSP HLDSSRSHPSPDPDTPSP VGDSRALQASRNTRIPHLG KKAVAEEDNGSIGEETDSSP GRKKFPLKIFKKPLKK



This product is suitable for in-vitro studies under the RESEARCH USE ONLY [RUO] licence. This product must not be used as for diagnostic or other medical purposes.
St John's Laboratory Ltd, Knowledge Dock Business Centre, University Way, London, E16 2RD | Tel: 0208 223 3081