

Anti-Caspase-6 antibody (STJ11106914)

STJ11106914

GENERAL INFORMATION

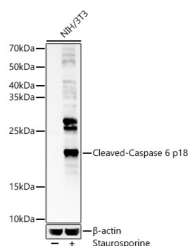
Product Type	Primary antibodies
Short Description	
Applications	WB/ELISA
Host/Source	Rabbit
Reactivity	Human/Mouse/Rat

PRODUCT PROPERTIES

Clonality	Polyclonal
Clone ID	
Concentration	Lot specific
Conjugation	Unconjugated
Purification	Affinity purification
Dilution Range	WB:1:500-1:2000 ELISA:Recommended starting concentration is 1 Mu g/mL. Please optimize the concentration based on your specific assay requirements.
Formulation	PBS with 0.05% Proclin300, 50% Glycerol, pH 7.3.
Isotype	IgG
Storage	
Instruction	

TARGET INFORMATION

Gene ID	839
Gene Symbol	CASP6
Uniprot ID	CASP6_HUMAN
Immunogen	AASVYTLPGADFLMCYSVA EGYSHRETVNGSWYIQDLC EMLGKYGSSLEFTELLTLVN RKVSQRRVDFCKDPSAIGKK QVPCFASMLTKKLHFFPKSN
Immunogen Region	
Specificity	Recombinant protein of human Caspase 6 p18.
Immunogen Sequence	AASVYTLPGADFLMCYSVA EGYSHRETVNGSWYIQDLC EMLGKYGSSLEFTELLTLVN RKVSQRRVDFCKDPSAIGKK QVPCFASMLTKKLHFFPKSN



Western blot analysis of lysates from NIH/3T3 cells, using Cleaved-Caspase 6 p18 Rabbit pAb (STJ11106914) at 1:500 dilution. NIH/3T3 cells were treated by staurosporine (1 uM) for 3 hour. Secondary antibody: HRP-conjugated Goat anti-Rabbit IgG (H+L) (STJ5000866) at 1:1000 dilution. Lysates/proteins: 25 Mu g per lane. Blocking buffer: 3% nonfat dry milk in TBST. Detection: ECL Basic Kit. Exposure time: 60s.

This product is suitable for in-vitro studies under the RESEARCH USE ONLY [RUO] licence. This product must not be used as for diagnostic or other medical purposes.
St John's Laboratory Ltd, Knowledge Dock Business Centre, University Way, London, E16 2RD | Tel: 0208 223 3081