

Anti-Caspase-9 antibody (250-350 aa) (STJ11106883)
STJ11106883

GENERAL INFORMATION

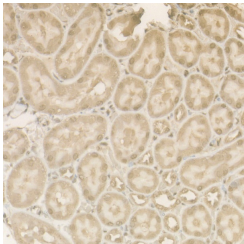
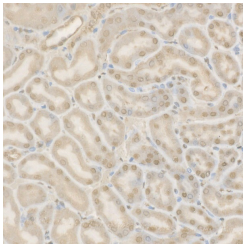
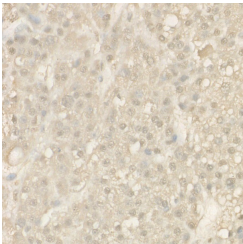
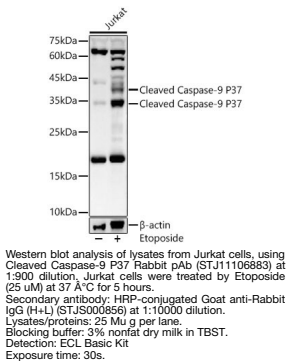
Product Type	Primary antibodies
Short Description	
Applications	WB/IHC-P/IF/ICC/ELISA
Host/Source	Rabbit
Reactivity	Human/Mouse/Rat

PRODUCT PROPERTIES

Clonality	Polyclonal
Clone ID	
Concentration	Lot specific
Conjugation	Unconjugated
Purification	Affinity purification
Dilution Range	WB:1:500-1:1000 IHC-P:1:50-1:200 IF:1:50-1:200 ELISA:Recommended starting concentration is 1 Mu g/mL. Please optimize the concentration based on your specific assay requirements.
Formulation	PBS with 0.05% Proclin300, 50% Glycerol, pH 7.3.
Isotype	IgG
Storage Instruction	

TARGET INFORMATION

Gene ID	842
Gene Symbol	CASP9
Uniprot ID	CASP9_HUMAN
Immunogen	
Immunogen	250-350 aa
Region	
Specificity	A synthetic peptide corresponding to a sequence within amino acids 250-350 of human Caspase-9 (NP_001220.2).
Immunogen	VGKTDGCPVSVKIVNIFNG TSCPSLGGKPKLFFIQACGG EQKDHGFEVASTSPEDESPG SNPEPDATPFQEGRLTFDQL
Sequence	DAISSLPTPSDIFVSYSTFP G



This product is suitable for in-vitro studies under the RESEARCH USE ONLY [RUO] licence. This product must not be used as for diagnostic or other medical purposes.
St John's Laboratory Ltd, Knowledge Dock Business Centre, University Way, London, E16 2RD | Tel: 0208 223 3081