

Anti-S100A6 antibody (1-90 aa) (STJ11106830)

STJ11106830

GENERAL INFORMATION

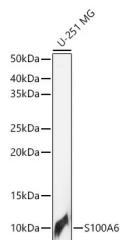
Product Type	Primary antibodies
Short Description	
Applications	WB/IHC-P/IF/ICC/IP/ELISA
Host/Source	Rabbit
Reactivity	Human/Mouse/Rat

PRODUCT PROPERTIES

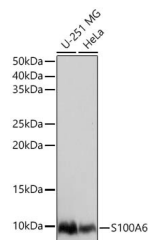
Clonality	Polyclonal
Clone ID	
Concentration	Lot specific
Conjugation	Unconjugated
Purification	Affinity purification
Dilution Range	WB:1:500-1:1000 IHC-P:1:50-1:200 IF/ICC:1:50-1:200 IP:0.5 Mu g-4 Mu g antibody for 200 Mu g-400 Mu g extracts of whole cells ELISA:Recommended starting concentration is 1 Mu g/mL. Please optimize the concentration based on your specif
Formulation	PBS with 0.02% Sodium Azide, 50% Glycerol, pH 7.3.
Isotype	IgG
Storage Instruction	

TARGET INFORMATION

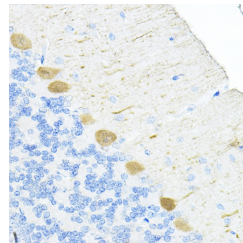
Gene ID	6277
Gene Symbol	S100A6
Uniprot ID	S10A6_HUMAN
Immunogen	
Immunogen Region	1-90 aa
Specificity	Recombinant fusion protein containing a sequence corresponding to amino acids 1-90 of human S100A6 (NP_055439.1).
Immunogen Sequence	MACPLDQAIGLLVAIFHKYS GREGDKHTLSKKELKELIQK ELTIGSKLQDAEIARLMEDL DRNKDQEVNFQEYVTFGLAL ALIYNEALKG



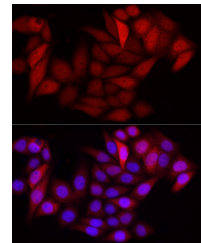
Western blot analysis of lysates from U-251 MG cells using S100A6 Rabbit pAb (STJ11106830) at 1:1000 dilution.
Secondary antibody: HRP-conjugated Goat anti-Rabbit IgG (H+L) (STJ5000856) at 1:10000 dilution.
Lysates/proteins: 25 µg per lane.
Blocking buffer: 3% nonfat dry milk in TBST.
Detection: ECL Basic Kit
Exposure time: 3s.



Western blot analysis of various lysates using S100A6 Rabbit pAb (STJ11106830) at 1:1000 dilution.
Secondary antibody: HRP-conjugated Goat anti-Rabbit IgG (H+L) (STJ5000856) at 1:10000 dilution.
Lysates/ proteins: 25 µg per lane.
Blocking buffer: 3% nonfat dry milk in TBST.
Detection: ECL Basic Kit
Exposure time: 1s.



Immunohistochemistry analysis of paraffin-embedded Rat cerebellum using S100A6 Rabbit pAb (STJ11106830) at dilution of 1:100 (40x lens). High pressure antigen retrieval performed with 0.01M Citrate Buffer (pH 6.0) prior to immunohistochemistry staining.



Immunofluorescence analysis of HeLa cells using S100A6 Rabbit pAb (STJ11106830) at dilution of 1:100 (40x lens). Secondary antibody: Cy3-conjugated Goat anti-Rabbit IgG (H+L) (STJ5001166) at 1:500 dilution. Blue: DAPI for nuclear staining.

This product is suitable for in-vitro studies under the RESEARCH USE ONLY [RUO] licence. This product must not be used as for diagnostic or other medical purposes.
St John's Laboratory Ltd, Knowledge Dock Business Centre, University Way, London, E16 2RD | Tel: 0208 223 3081