

Anti-PRPS1 antibody (250-322 aa) (STJ11106806)

STJ11106806

GENERAL INFORMATION

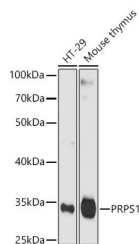
Product Type	Primary antibodies
Short Description	
Applications	WB/ELISA
Host/Source	Rabbit
Reactivity	Human/Mouse

PRODUCT PROPERTIES

Clonality	Polyclonal
Clone ID	
Concentration	Lot specific
Conjugation	Unconjugated
Purification	Affinity purification
Dilution Range	WB:1:500-1:2000 ELISA:Recommended starting concentration is 1 μ g/mL. Please optimize the concentration based on your specific assay requirements.
Formulation	PBS with 0.02% Sodium Azide, 50% Glycerol, pH 7.3.
Isotype	IgG
Storage Instruction	

TARGET INFORMATION

Gene ID	5631
Gene Symbol	PRPS1
Uniprot ID	PRPS1_HUMAN
Immunogen	
Immunogen Region	250-322 aa
Specificity	A synthetic peptide corresponding to a sequence within amino acids 250-322 of human PRPS1 (NP_002755.1).
Immunogen Sequence	HGIFSGPAISRINNACFEAV VVTNTIPQEDKMKHCSTQV IDISMILAEAIRRTHNGESV SYLFSHVPL



Western blot analysis of various lysates using PRPS1 Rabbit pAb (STJ11106806) at 1:1000 dilution. Secondary antibody: HRP Goat Anti-Rabbit IgG (H+L) (STJS000856) at 1:10000 dilution. Lysates/ proteins: 25 μ g per lane. Blocking buffer: 3 % nonfat dry milk in TBST. Detection: ECL Enhanced Kit. Exposure time: 40s.

This product is suitable for in-vitro studies under the RESEARCH USE ONLY [RUO] licence. This product must not be used as for diagnostic or other medical purposes.
St John's Laboratory Ltd, Knowledge Dock Business Centre, University Way, London, E16 2RD | Tel: 0208 223 3081