

Anti-CDK6 antibody (226-326 aa) (STJ11106790)

STJ11106790

GENERAL INFORMATION

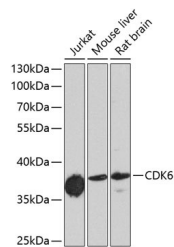
Product Type	Primary antibodies
Short Description	
Applications	WB/ELISA
Host/Source	Rabbit
Reactivity	Human/Mouse/Rat

PRODUCT PROPERTIES

Clonality	Polyclonal
Clone ID	
Concentration	Lot specific
Conjugation	Unconjugated
Purification	Affinity purification
Dilution Range	WB:1:500-1:2000 ELISA:Recommended starting concentration is 1 Mu g/mL. Please optimize the concentration based on your specific assay requirements.
Formulation	PBS with 0.02% Sodium Azide, 50% Glycerol, pH 7.3.
Isotype	IgG
Storage Instruction	

TARGET INFORMATION

Gene ID	1021
Gene Symbol	CDK6
Uniprot ID	CDK6_HUMAN
Immunogen	
Immunogen	226-326 aa
Region	
Specificity	A synthetic peptide corresponding to a sequence within amino acids 226-326 of human CDK6 (NP_001250.1).
Immunogen	DQLGKILDVIGLPGEEDWPR DVALPRQAFHSKSAPIEFK VTDIDELGKDLLLKCLTFNP AKRISAYSALSHPYFQDLER
Sequence	CKENLDShLPPSQNTSELNT A



Western blot analysis of various lysates using CDK6
Rabbit pAb (STJ11106790) at 1:1000 dilution.
Secondary antibody: HRP-conjugated Goat anti-Rabbit
IgG (H+L) (STJS000856) at 1:10000 dilution.
Lysates/proteins: 25 Mu g per lane.
Blocking buffer: 3% nonfat dry milk in TBST.
Detection: ECL Enhanced Kit
Exposure time: 90s.

This product is suitable for in-vitro studies under the RESEARCH USE ONLY [RUO] licence. This product must not be used as for diagnostic or other medical purposes.
St John's Laboratory Ltd, Knowledge Dock Business Centre, University Way, London, E16 2RD | Tel: 0208 223 3081