

Anti-Edf1 antibody (1-148 aa) (STJ11106614)

STJ11106614

GENERAL INFORMATION

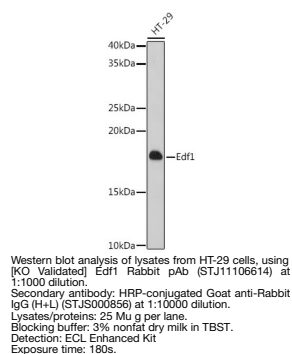
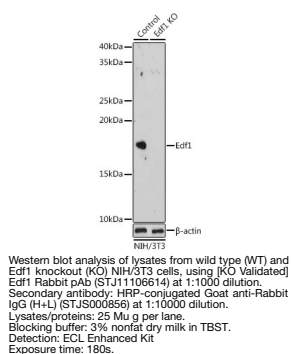
Product Type	Primary antibodies
Short Description	
Applications	WB/ELISA
Host/Source	Rabbit
Reactivity	Human/Mouse

PRODUCT PROPERTIES

Clonality	Polyclonal
Clone ID	
Concentration	Lot specific
Conjugation	Unconjugated
Purification	Affinity purification
Dilution	WB:1:500-1:1000
Range	ELISA:Recommended starting concentration is 1 Mu g/mL. Please optimize the concentration based on your specific assay requirements.
Formulation	PBS with 0.01% Thimerosal, 50% Glycerol, pH 7.3.
Isotype	IgG
Storage	
Instruction	

TARGET INFORMATION

Gene ID	59022
Gene Symbol	Edf1
Uniprot ID	EDF1_MOUSE
Immunogen	
Immunogen Region	1-148 aa
Specificity	Recombinant fusion protein containing a sequence corresponding to amino acids 1-148 of mouse Edf1 (NP_067494.1). MAESDWDVTVLRLKKGPTAA QAKSKQAILAAQRRGEDVET SKKWAAGONKQHSITKNTAK LDRETEELHHDRVTLEVGVK
Immunogen Sequence	IQRGRQSKGLTQKDLATKIN EKPQVIADYESGRAIPNNQV LGKIERAIGLKLRGKDIGKP IEKGPKAK



This product is suitable for in-vitro studies under the RESEARCH USE ONLY [RUO] licence. This product must not be used as for diagnostic or other medical purposes.
St John's Laboratory Ltd, Knowledge Dock Business Centre, University Way, London, E16 2RD | Tel: 0208 223 3081