

Anti-Fam50b antibody (70-150 aa) (STJ11106606)

GENERAL INFORMATION

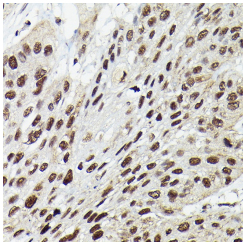
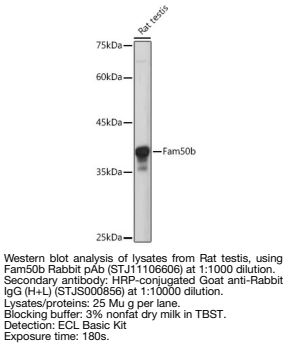
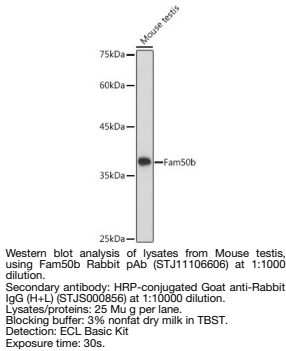
| | |
|--------------------------|--------------------|
| Product Type | Primary antibodies |
| Short Description | |
| Applications | WB/IHC-P/ELISA |
| Host/Source | Rabbit |
| Reactivity | Human/Mouse/Rat |

PRODUCT PROPERTIES

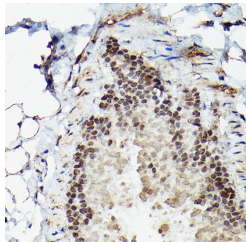
| | |
|----------------------------|--|
| Clonality | Polyclonal |
| Clone ID | |
| Concentration | Lot specific |
| Conjugation | Unconjugated |
| Purification | Affinity purification |
| Dilution Range | WB:1:500-1:1000 IHC-P:1:50-1:200 ELISA:Recommended starting concentration is 1 Mu g/mL. Please optimize the concentration based on your specific assay requirements. |
| Formulation | PBS with 0.01% Thimerosal, 50% Glycerol, pH 7.3. |
| Isotype | IgG |
| Storage Instruction | |

TARGET INFORMATION

| | |
|---------------------------|---|
| Gene ID | 108161 |
| Gene Symbol | Fam50b |
| Uniprot ID | FA50B_MOUSE |
| Immunogen | |
| Immunogen Region | 70-150 aa |
| Specificity | Recombinant fusion protein containing a sequence corresponding to amino acids 70-150 of mouse Fam50b (NP_620085.2). |
| Immunogen Sequence | LNDMKAKQEQALLREREMQLA KREQLEQRRIQLEMLREKER RRERKRKISNLSFTLDEEEG DQEDSRQAESAESAHSAGAKK N |



Immunohistochemistry analysis of paraffin-embedded Human esophageal cancer using Fam50b Rabbit pAb (STJ11106606) at dilution of 1:50 (40x lens). High pressure antigen retrieval performed with 0.01M Citrate Buffer (pH 6.0) prior to immunohistochemistry staining.



Immunohistochemistry analysis of paraffin-embedded Mouse lung using Fam50b Rabbit pAb (STJ11106606) at dilution of 1:50 (40x lens). High pressure antigen retrieval performed with 0.01M Citrate Buffer (pH 6.0) prior to immunohistochemistry staining.

This product is suitable for in-vitro studies under the RESEARCH USE ONLY [RUO] licence. This product must not be used as for diagnostic or other medical purposes.
St John's Laboratory Ltd, Knowledge Dock Business Centre, University Way, London, E16 2RD | Tel: 0208 223 3081