

Anti-Cdk1 antibody (220-352 aa) (STJ11106605)

STJ11106605

GENERAL INFORMATION

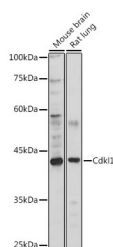
| | |
|--------------------------|--------------------|
| Product Type | Primary antibodies |
| Short Description | |
| Applications | WB/ELISA |
| Host/Source | Rabbit |
| Reactivity | Mouse/Rat |

PRODUCT PROPERTIES

| | |
|-----------------------|--|
| Clonality | Polyclonal |
| Clone ID | |
| Concentration | Lot specific |
| Conjugation | Unconjugated |
| Purification | Affinity purification |
| Dilution Range | WB:1:500-1:1000 |
| | ELISA: Recommended starting concentration is 1 µg/mL. Please optimize the concentration based on your specific assay requirements. |
| Formulation | PBS with 0.01% Thimerosal, 50% Glycerol, pH 7.3. |
| Isotype | IgG |
| Storage | |
| Instruction | |

TARGET INFORMATION

| | |
|---------------------------|--|
| Gene ID | 71091 |
| Gene Symbol | Cdk1 |
| Uniprot ID | CDKL1_MOUSE |
| Immunogen | |
| Immunogen Region | 220-352 aa |
| Specificity | Recombinant fusion protein containing a sequence corresponding to amino acids 220-352 of mouse Cdk1 (NP_899117.1). |
| Immunogen Sequence | DLIPRHQQVFSMNQYFSGVK IPDPEDMETLELKFPNISYS ALGFLKGCLHMDPAERLTCE QLLQHPYFDSIREVGELTRQ HDKPARKTLRQSRKHLTGLQ YLPQLTSSRLPALDNKKYH CSTKRFNYHFPNI |



Western blot analysis of various lysates using Cdk1 Rabbit pAb (STJ11106605) at 1:1000 dilution.
Secondary antibody: HRP-conjugated Goat anti-Rabbit IgG (H+L) (STJ5000656) at 1:10000 dilution.
Lysates/proteins: 25 µg/g per lane.
Blocking buffer: 3% nonfat dry milk in TBST.
Detection: ECL Basic Kit
Exposure time: 180s.

This product is suitable for in-vitro studies under the RESEARCH USE ONLY [RUO] licence. This product must not be used as for diagnostic or other medical purposes.
St John's Laboratory Ltd, Knowledge Dock Business Centre, University Way, London, E16 2RD | Tel: 0208 223 3081