

Anti-PD-1/CD279 antibody (25-168 aa) [SMM] (STJ11106599)

STJ11106599

GENERAL INFORMATION

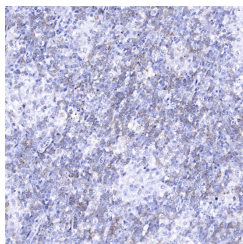
Product Type	Primary antibodies
Short Description	
Applications	IHC-P/ELISA
Host/Source	Mouse
Reactivity	Human

PRODUCT PROPERTIES

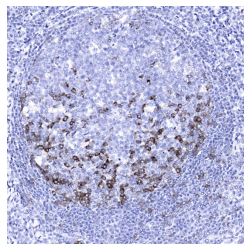
Clonality	Monoclonal
Clone ID	SMM
Concentration	Lot specific
Conjugation	Unconjugated
Purification	Affinity purification
Dilution	IHC-P:1:50-1:200
Range	ELISA:Recommended starting concentration is 1 µg/mL. Please optimize the concentration based on your specific assay requirements.
Formulation	PBS with 0.05% Proclin300, 50% GlycerolpH 7.3.
Isotype	IgG1k
Storage	
Instruction	

TARGET INFORMATION

Gene ID	5133
Gene Symbol	PDCD1
Uniprot ID	PDCD1_HUMAN
Immunogen	
Immunogen Region	25-168 aa
Specificity	Recombinant fusion protein containing a sequence corresponding to amino acids 25-168 of human PD-1/CD279 (NP_005009.2).
Immunogen Sequence	LDSPDRPWNPPTFSPALLVV TEGDNATFTCSFSNTSESV LNWYRMSPSNQTDKLAAPFE DRSQPGQDCRFRVTQLPNGR DFHMSVVRARRNDSGTYLCG AISLAPKAQIKESLRAELRV TERRAEVPTAHPPSPRPAG QFQT



Immunohistochemistry analysis of paraffin-embedded Human T-cell malignant lymphoma using PD-1/CD279 Mouse mAb (STJ11106599) at dilution of 1:50 (40x lens). High pressure antigen retrieval performed with 0.01M Citrate Buffer (pH 6.0) prior to immunohistochemistry staining.



Immunohistochemistry analysis of paraffin-embedded Human tonsil using PD-1/CD279 Mouse mAb (STJ11106599) at dilution of 1:50 (40x lens). High pressure antigen retrieval performed with 0.01M Citrate Buffer (pH 6.0) prior to immunohistochemistry staining.