

Anti-GSDMD antibody (Full Length + N-Term) (STJ11106595)

STJ11106595

GENERAL INFORMATION

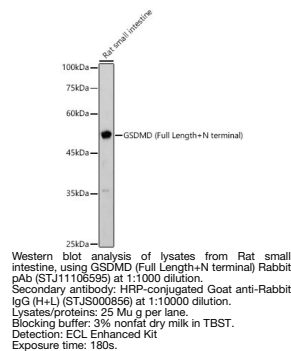
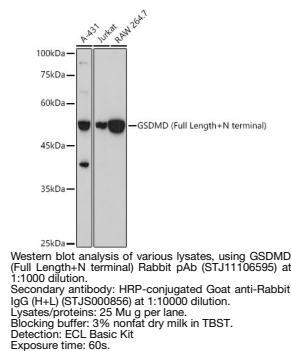
Product Type	Primary antibodies
Short Description	
Applications	WB/IF/ICC/ELISA
Host/Source	
Reactivity	Human/Mouse/Rat

PRODUCT PROPERTIES

Clonality	Polyclonal
Clone ID	
Concentration	Lot specific
Conjugation	Unconjugated
Purification	Affinity purification
Dilution Range	WB:1:500-1:2000 IF/ICC:1:50-1:200 ELISA:Recommended starting concentration is 1 µg/mL. Please optimize the concentration based on your specific assay requirements.
Formulation	PBS with 0.05% Proclin300, 50% Glycerol, pH 7.3.
Isotype	IgG
Storage Instruction	

TARGET INFORMATION

Gene ID	79792
Gene Symbol	GSDMD
Uniprot ID	GSDMD_HUMAN
Immunogen	
Immunogen Region	Full Length + N-Term
Specificity	Recombinant fusion protein containing a sequence corresponding to amino acids 154-252 of human GSDMD (NP_079012.3).
Immunogen Sequence	GDNVYVTEVLQTQKEVEVT RTHKREGSGRFSPLGATCLQ GEGQGHLSQKKTVTIPSGST LAFRVAQLVIDSDLDVLLFP DKKQRTFQPPATGHKRSTS



This product is suitable for in-vitro studies under the RESEARCH USE ONLY [RUO] licence. This product must not be used as for diagnostic or other medical purposes.
St John's Laboratory Ltd, Knowledge Dock Business Centre, University Way, London, E16 2RD | Tel: 0208 223 3081