

Anti-NDUFAB1 antibody (50-150 aa) (STJ11106581)

STJ11106581

GENERAL INFORMATION

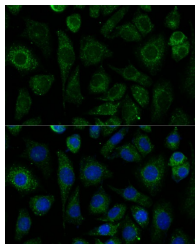
Product Type	Primary antibodies
Short Description	
Applications	IF/ICC/ELISA
Host/Source	Rabbit
Reactivity	Mouse

PRODUCT PROPERTIES

Clonality	Polyclonal
Clone ID	
Concentration	Lot specific
Conjugation	Unconjugated
Purification	Affinity purification
Dilution Range	IF/ICC:1:50-1:200 ELISA:Recommended starting concentration is 1 Mu g/mL. Please optimize the concentration based on your specific assay requirements.
Formulation	PBS with 0.01% Thimerosal, 50% Glycerol, pH 7.3.
Isotype	IgG
Storage Instruction	

TARGET INFORMATION

Gene ID	4706
Gene Symbol	NDUFAB1
Uniprot ID	ACPM_HUMAN
Immunogen	
Immunogen Region	50-150 aa
Specificity	A synthetic peptide corresponding to a sequence within amino acids 50-150 of human NDUFAB1 (NP_004994.1).
Immunogen Sequence	PALVLAQVPGRVTQLCRQYS DMPPLTLLEGIDRVLYVLKL YDKIDPEKLSVNSHFMDLGLDSDLQQVEIIMAMEDEFGFE IPDIDAEKLMCPQEIVDYIA D



Immunofluorescence analysis of L929 cells using NDUFAB1 Rabbit pAb (STJ11106581) at dilution of 1:100. Secondary antibody: Cy3-conjugated Goat anti-Rabbit IgG (H+L) (STJS001166) at 1:500 dilution. Blue: DAPI for nuclear staining.

This product is suitable for in-vitro studies under the RESEARCH USE ONLY [RUO] licence. This product must not be used as for diagnostic or other medical purposes.
St John's Laboratory Ltd, Knowledge Dock Business Centre, University Way, London, E16 2RD | Tel: 0208 223 3081