

Anti-CHML antibody (1-100 aa) (STJ11106577)
STJ11106577

GENERAL INFORMATION

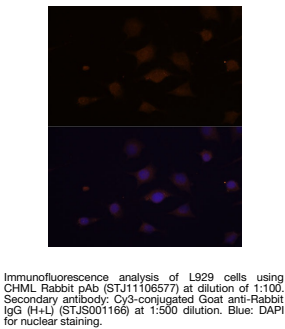
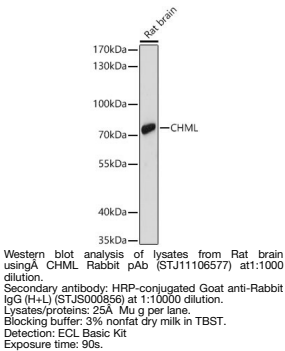
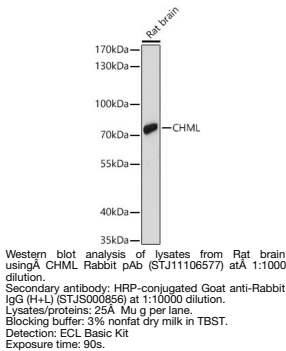
Product Type	Primary antibodies
Short Description	
Applications	WB/IF/CC/ELISA
Host/Source	Rabbit
Reactivity	Mouse/Rat

PRODUCT PROPERTIES

Clonality	Polyclonal
Clone ID	
Concentration	Lot specific
Conjugation	Unconjugated
Purification	Affinity purification
Dilution Range	WB:1:500-1:1000 IF/CC:1:50-1:200 ELISA:Recommended starting concentration is 1 Mu g/mL. Please optimize the concentration based on your specific assay requirements.
Formulation	PBS with 0.01% Thimerosal, 50% Glycerol, pH 7.3.
Isotype	IgG
Storage Instruction	

TARGET INFORMATION

Gene ID	1122
Gene Symbol	CHML
Uniprot ID	RAE2_HUMAN
Immunogen	
Immunogen Region	1-100 aa
Specificity	A synthetic peptide corresponding to a sequence within amino acids 1-100 of human CHML (NP_001812.2). MADNLPTEFDVVIIGTGLPE SILAAACSRSGQRVLHIDSR SYYGGNWASFSGLLSWLK EYQQNNDIGEESTVWVQDLI
Immunogen Sequence	HETEEAITLRKKDETIQHTE



This product is suitable for in-vitro studies under the RESEARCH USE ONLY [RUO] licence. This product must not be used as for diagnostic or other medical purposes.
St John's Laboratory Ltd, Knowledge Dock Business Centre, University Way, London, E16 2RD | Tel: 0208 223 3081