

# Anti-ARVCF antibody (1-100 aa) (STJ11106576)

STJ11106576

## GENERAL INFORMATION

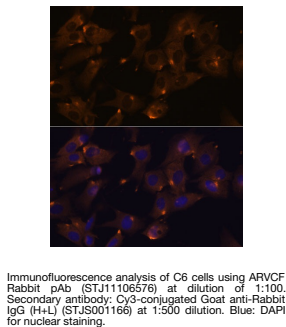
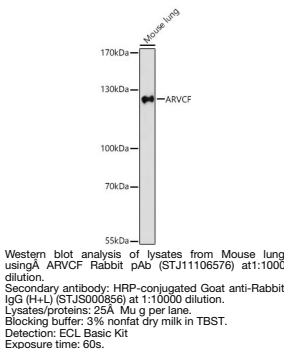
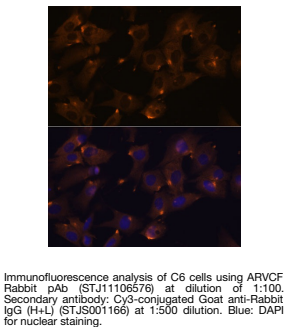
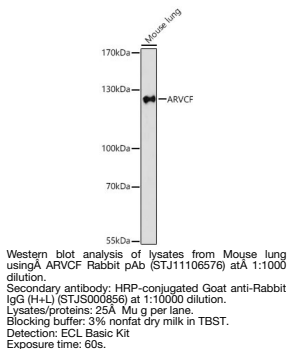
<b>Product Type</b>	Primary antibodies
<b>Short Description</b>	
<b>Applications</b>	WB/IF/ICC/ELISA
<b>Host/Source</b>	Rabbit
<b>Reactivity</b>	Mouse/Rat

## PRODUCT PROPERTIES

<b>Clonality</b>	Polyclonal
<b>Clone ID</b>	
<b>Concentration</b>	Lot specific
<b>Conjugation</b>	Unconjugated
<b>Purification</b>	Affinity purification
<b>Dilution Range</b>	WB:1:500-1:1000 IF/ICC:1:50-1:200 ELISA:Recommended starting concentration is 1 Mu g/mL. Please optimize the concentration based on your specific assay requirements.
<b>Formulation</b>	PBS with 0.01% Thimerosal, 50% Glycerol, pH 7.3.
<b>Isotype</b>	IgG
<b>Storage</b>	
<b>Instruction</b>	

## TARGET INFORMATION

<b>Gene ID</b>	421
<b>Gene Symbol</b>	ARVCF
<b>Uniprot ID</b>	ARVC_HUMAN
<b>Immunogen</b>	
<b>Immunogen Region</b>	1-100 aa
<b>Specificity</b>	A synthetic peptide corresponding to a sequence within amino acids 1-100 of human ARVCF (NP_001661.1).
<b>Immunogen Sequence</b>	MEDCNVHSAASILASVKEQ ARFERLTRALEQERRHVALQ LERAQPGMVGSGMGSGQPL PMAWQQLVLQEQSPGSQASL ATMPEAPDVLEETVTEEDP



This product is suitable for in-vitro studies under the RESEARCH USE ONLY [RUO] licence. This product must not be used as for diagnostic or other medical purposes.  
St John's Laboratory Ltd, Knowledge Dock Business Centre, University Way, London, E16 2RD | Tel: 0208 223 3081