

Anti-ASB3 antibody (1-145 aa) (STJ11106526)

STJ11106526

GENERAL INFORMATION

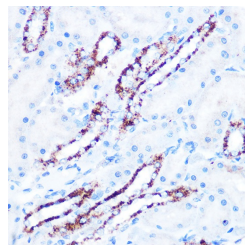
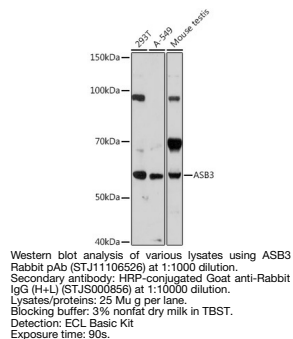
Product Type	Primary antibodies
Short Description	
Applications	WB/IHC-P/IF/ICC/ELISA
Host/Source	Rabbit
Reactivity	Human/Mouse/Rat

PRODUCT PROPERTIES

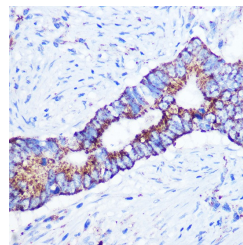
Clonality	Polyclonal
Clone ID	
Concentration	Lot specific
Conjugation	Unconjugated
Purification	Affinity purification
Dilution	WB:1:500-1:1000
Range	IHC-P:1:50-1:200 IF/ICC:1:50-1:200 ELISA:Recommended starting concentration is 1 µg/mL. Please optimize the concentration based on your specific assay requirements.
Formulation	PBS with 0.01% Thimerosal, 50% Glycerol, pH 7.3.
Isotype	IgG
Storage	
Instruction	

TARGET INFORMATION

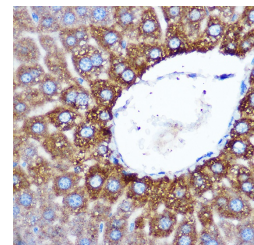
Gene ID	100302652/51130
Gene Symbol	ASB3
Uniprot ID	ASB3_HUMAN
Immunogen	
Region	1-145 aa
Specificity	Recombinant fusion protein containing a sequence corresponding to amino acids 1-145 of human ASB3 (NP_057199.1).
Immunogen Sequence	MDFTEAYADTCSTVGLAARE GNVKVLRLKLLKKGRSDVDAD NRGWMPHEAAAYHNSVECLQ MLINADSSSENYIKMKTFFEGF CALHLAASQGHWWKIVQILLE AGADPNATTEETPLFLAV ENGQIDVLRLLQLHGAVNG SHSMC



Immunohistochemistry analysis of paraffin-embedded Rat kidney using ASB3 Rabbit pAb (STJ11106526) at dilution of 1:100 (40x lens). Microwave antigen retrieval performed with 0.01M PBS Buffer (pH 7.2) prior to immunohistochemistry staining.



Immunohistochemistry analysis of paraffin-embedded Human colon carcinoma using ASB3 Rabbit pAb (STJ11106526) at dilution of 1:100 (40x lens). Microwave antigen retrieval performed with 0.01M PBS Buffer (pH 7.2) prior to immunohistochemistry staining.



Immunohistochemistry analysis of paraffin-embedded Mouse liver using ASB3 Rabbit pAb (STJ11106526) at dilution of 1:100 (40x lens). Microwave antigen retrieval performed with 0.01M PBS Buffer (pH 7.2) prior to immunohistochemistry staining.

This product is suitable for in-vitro studies under the RESEARCH USE ONLY [RUO] licence. This product must not be used as for diagnostic or other medical purposes.
St John's Laboratory Ltd, Knowledge Dock Business Centre, University Way, London, E16 2RD | Tel: 0208 223 3081