

Anti-Enpp1 antibody (580-730 aa) (STJ11106415)

STJ11106415

GENERAL INFORMATION

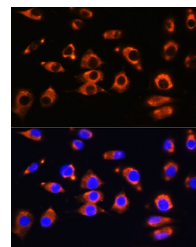
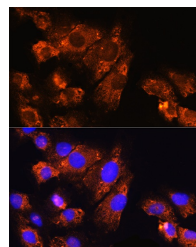
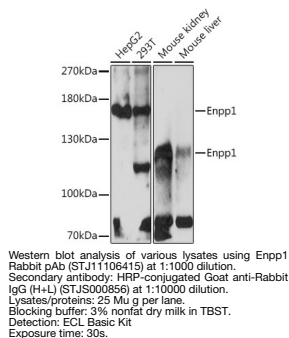
Product Type	Primary antibodies
Short Description	
Applications	WB/IF/ICC/ELISA
Host/Source	Rabbit
Reactivity	Human/Mouse/Rat

PRODUCT PROPERTIES

Clonality	Polyclonal
Clone ID	
Concentration	Lot specific
Conjugation	Unconjugated
Purification	Affinity purification
Dilution	WB:1:500-1:1000
Range	IF/CC:1:50-1:200
	ELISA:Recommended starting concentration is 1 Mu g/mL. Please optimize the concentration based on your specific assay requirements.
Formulation	PBS with 0.01% Thimerosal, 50% Glycerol, pH 7.3.
Isotype	IgG
Storage	
Instruction	

TARGET INFORMATION

Gene ID	18605
Gene Symbol	Enpp1
Uniprot ID	ENPP1_MOUSE
Immunogen	
Immunogen Region	580-730 aa
Specificity	Recombinant fusion protein containing a sequence corresponding to amino acids 580-730 of mouse Enpp1 (NP_032839.3).
Immunogen Sequence	PIYNPSHPKKEGFLSQCPK STSNDLGCTCDPWIVPIKDF EKQLNLTTEDDDIYHMTVPY GRPRILLKQHRVCLLQQQKF LTGYSLDLLMPLWASYTFLS NDQFSRDDFSNCLYQDLRIP LSPVHKCSYYKSNSKLSYGF LTPPRLNRVSN



This product is suitable for in-vitro studies under the RESEARCH USE ONLY [RUO] licence. This product must not be used as for diagnostic or other medical purposes.
St John's Laboratory Ltd, Knowledge Dock Business Centre, University Way, London, E16 2RD | Tel: 0208 223 3081