

## Anti-Gsdmc3 antibody (2-80 aa) (STJ11106227)

STJ11106227

### GENERAL INFORMATION

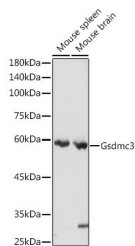
<b>Product Type</b>	Primary antibodies
<b>Short Description</b>	
<b>Applications</b>	WB/ELISA
<b>Host/Source</b>	Rabbit
<b>Reactivity</b>	Mouse

### PRODUCT PROPERTIES

<b>Clonality</b>	Polyclonal
<b>Clone ID</b>	
<b>Concentration</b>	Lot specific
<b>Conjugation</b>	Unconjugated
<b>Purification</b>	Affinity purification
<b>Dilution Range</b>	WB:1:1000-1:5000 ELISA:Recommended starting concentration is 1 Mu g/mL. Please optimize the concentration based on your specific assay requirements.
<b>Formulation</b>	PBS with 0.01% Thimerosal, 50% Glycerol, pH 7.3.
<b>Isotype</b>	IgG
<b>Storage Instruction</b>	

### TARGET INFORMATION

<b>Gene ID</b>	270328
<b>Gene Symbol</b>	Gsdmc3
<b>Uniprot ID</b>	GSDC3_MOUSE
<b>Immunogen</b>	
<b>Immunogen Region</b>	2-80 aa
<b>Specificity</b>	Recombinant fusion protein containing a sequence corresponding to amino acids 2-80 of mouse Gsdmc3 (NP_899017.2).
<b>Immunogen Sequence</b>	GYSFDRASKDVVKLQGRDL RPVECLSDATKFRFLHILQE TPRSGWETEDIPVGFTLLDL LEPNFPVPEPEVSAPKPF1



Western blot analysis of various lysates using Gsdmc3  
Rabbit pAb (STJ11106227) at 1:3000 dilution.  
Secondary antibody: HRP-conjugated Goat anti-Rabbit  
IgG (H+L) (STJS000858) at 1:10000 dilution.  
Lysates/proteins: 25 Mu g per lane.  
Blocking buffer: 3% nonfat dry milk in TBST.  
Detection: ECL Basic Kit  
Exposure time: 10s.

This product is suitable for in-vitro studies under the RESEARCH USE ONLY [RUO] licence. This product must not be used as for diagnostic or other medical purposes.  
St John's Laboratory Ltd, Knowledge Dock Business Centre, University Way, London, E16 2RD | Tel: 0208 223 3081