

Anti-Ccer1 antibody (1-200 aa) (STJ11106216)

STJ11106216

GENERAL INFORMATION

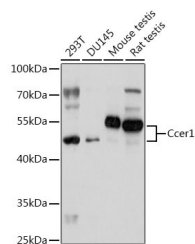
Product Type	Primary antibodies
Short Description	
Applications	WB/ELISA
Host/Source	Rabbit
Reactivity	Human/Mouse/Rat

PRODUCT PROPERTIES

Clonality	Polyclonal
Clone ID	
Concentration	Lot specific
Conjugation	Unconjugated
Purification	Affinity purification
Dilution	WB:1:500-1:2000
Range	ELISA:Recommended starting concentration is 1 Mu g/mL. Please optimize the concentration based on your specific assay requirements.
Formulation	PBS with 0.01% Thimerosal, 50% Glycerol, pH 7.3.
Isotype	IgG
Storage	
Instruction	

TARGET INFORMATION

Gene ID	196477
Gene Symbol	CCER1
Uniprot ID	CCER1_HUMAN
Immunogen	
Immunogen Region	1-200 aa
Specificity	Recombinant fusion protein containing a sequence corresponding to amino acids 1-200 of mouse Ccer1 (NP_080000.1).
Immunogen Sequence	MTQTVNEREDPLNLGGGGWA SSIPLRTWSSYHRRQRGAPV SKRRYRDGPKIEYEASRKQP KQQRSPGSWFQPSRGPYWAL YSNWERCGPWRPPLIAFQS PLOPAQMIRAYGLHPLCVCC CSCWSGPWNPGWERPPGRKK RWGRRGRGLRRHRRSFPRN PPIDLSKMLRPVNLGWRAP GMRAPRNTTQFIMNQVYEDM



Western blot analysis of various lysates using Ccer1 Rabbit pAb (STJ11106216) at 1:1000 dilution.
Secondary antibody: HRP-conjugated Goat anti-Rabbit IgG (H+L) (STJ5000856) at 1:10000 dilution.
Lysates/proteins: 25 Mu g per lane.
Blocking buffer: 3% nonfat dry milk in TBST.
Detection: ECL Basic Kit
Exposure time: 30s.

This product is suitable for in-vitro studies under the RESEARCH USE ONLY [RUO] licence. This product must not be used as for diagnostic or other medical purposes.
St John's Laboratory Ltd, Knowledge Dock Business Centre, University Way, London, E16 2RD | Tel: 0208 223 3081