

Anti-ligp1 antibody (150-250 aa) (STJ11106164)

STJ11106164

GENERAL INFORMATION

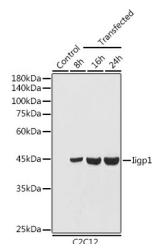
Product Type	Primary antibodies
Short Description	
Applications	WB/ELISA
Host/Source	Rabbit
Reactivity	Mouse

PRODUCT PROPERTIES

Clonality	Polyclonal
Clone ID	
Concentration	Lot specific
Conjugation	Unconjugated
Purification	Affinity purification
Dilution Range	WB:1:500-1:1000 ELISA:Recommended starting concentration is 1 Mu g/mL. Please optimize the concentration based on your specific assay requirements.
Formulation	PBS with 0.05% Proclin300, 50% Glycerol, pH 7.3.
Isotype	IgG
Storage Instruction	

TARGET INFORMATION

Gene ID	60440
Gene Symbol	ligp1
Uniprot ID	IIGP1_MOUSE
Immunogen	
Immunogen Region	150-250 aa
Specificity	A synthetic peptide corresponding to a sequence within amino acids 150-250 of mouse ligp1 (NP_068564.4).
Immunogen Sequence	DFIIISATRFKKNIDIAK AISMMKKEFYFVRTKVDSDI TNEADGKPQTFDKEKVLQDI RLNCVNTFRENGIAEPPFL LSNKNVCHYDFPVLMDKLIS D



Western blot analysis of lysates from C2C12 cells, using ligp1 Rabbit pAb (STJ11106164) at 1:1000 dilution.
Secondary antibody: HRP-conjugated Goat anti-Rabbit IgG (H+L) (STJS000856) at 1:10000 dilution.
Lysates/proteins: 25 Mu g per lane.
Blocking buffer: 3% nonfat dry milk in TBST.
Detection: ECL Basic Kit
Exposure time: 30s.

This product is suitable for in-vitro studies under the RESEARCH USE ONLY [RUO] licence. This product must not be used as for diagnostic or other medical purposes.
St John's Laboratory Ltd, Knowledge Dock Business Centre, University Way, London, E16 2RD | Tel: 0208 223 3081