

Anti-RBBP4 antibody (1-425 aa) (STJ11106147)
STJ11106147

GENERAL INFORMATION

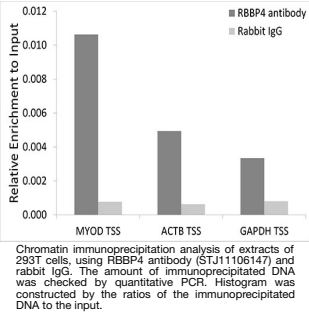
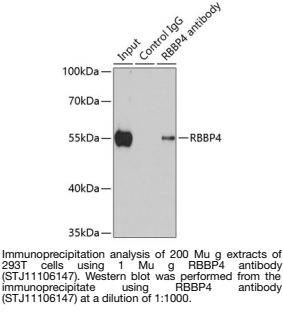
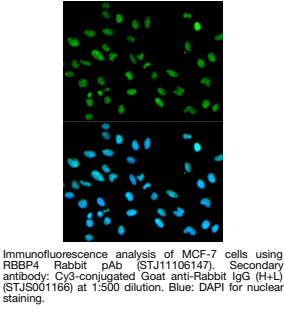
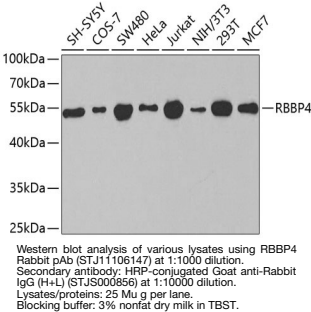
Product Type	Primary antibodies
Short Description	
Applications	WB/IF/ICC/IP/ELISA/ChIP
Host/Source	Rabbit
Reactivity	Human/Mouse/Rat

PRODUCT PROPERTIES

Clonality	Polyclonal
Clone ID	
Concentration	Lot specific
Conjugation	Unconjugated
Purification	Affinity purification
Dilution Range	WB:1:500-1:2000 IF/CC:1:50-1:200 IP:0.5 Mu g-4 Mu g antibody for 200 Mu g-400 Mu g extracts of whole cells ELISA:Recommended starting concentration is 1 Mu g/mL. Please optimize the concentration based on your specific assay requirements
Formulation	PBS with 0.02% Sodium Azide, 50% Glycerol, pH 7.3.
Isotype	IgG
Storage	
Instruction	

TARGET INFORMATION

Gene ID	5928
Gene Symbol	RBBP4
Uniprot ID	RBBP4_HUMAN
Immunogen	
Immunogen Region	1-425 aa
Specificity	Recombinant fusion protein containing a sequence corresponding to amino acids 1-425 of human RBBP4 (NP_005601.1).
Immunogen Sequence	MADKEAAFDDAVEERVINEE YKIWKKNTPFLYDLVMTHAL EWPSLTAQWLDPVTRPEGKD FSIHRLVLGHTSDEQNHVLV IASVQLPNDDAQFDASHYDS EKGEFGGFGSVSGKIEIK INHEGEVNRARYMPQNPCII ATKTPSSDVLVFDYTKHPSK PDPSGECNPDLRLRGHQKEG YGLSWNPNLGSHLLSASDDH TICLWDISAVPKEGKVVDKAK TIFTGHTAVVEDVSWHLLH



This product is suitable for in-vitro studies under the RESEARCH USE ONLY [RUO] licence. This product must not be used as for diagnostic or other medical purposes.
St John's Laboratory Ltd, Knowledge Dock Business Centre, University Way, London, E16 2RD | Tel: 0208 223 3081