

Anti-SOX30 antibody (1-150 aa) (STJ11106146)

STJ11106146

GENERAL INFORMATION

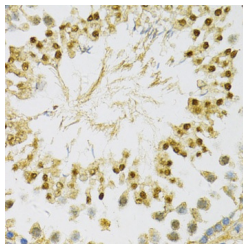
Product Type	Primary antibodies
Short Description	
Applications	IHC-P/ELISA
Host/Source	Rabbit
Reactivity	Mouse/Rat

PRODUCT PROPERTIES

Clonality	Polyclonal
Clone ID	
Concentration	Lot specific
Conjugation	Unconjugated
Purification	Affinity purification
Dilution	IHC-P:1:50-1:200
Range	ELISA:Recommended starting concentration is 1 µg/mL. Please optimize the concentration based on your specific assay requirements.
Formulation	PBS with 0.01% Thimerosal, 50% Glycerol, pH 7.3.
Isotype	IgG
Storage	
Instruction	

TARGET INFORMATION

Gene ID	214105
Gene Symbol	Sox30
Uniprot ID	SOX30_MOUSE
Immunogen	
Immunogen Region	1-150 aa
Specificity	Recombinant fusion protein containing a sequence corresponding to amino acids 1-150 of mouse SOX30 (NP_775560.1).
Immunogen Sequence	MERARPEPPPPPPPPRQPP RPTPPRPLRPAPPAQPVVEAA TFRAAAAERSQSPSAQATAA MAAVASSCGEAAAAGAQAAG TRRLQVKPEQVLLPPGGP GVPPAPDEGAAAAAAAAA ASSAQARLLQLRPELLLLPP QSAADGGPCR



Immunohistochemistry analysis of paraffin-embedded Rat testis using SOX30 Rabbit pAb (STJ11106146) at dilution of 1:100 (40x lens). Microwave antigen retrieval performed with 0.01M PBS Buffer (pH 7.2) prior to immunohistochemistry staining.