

Anti-Zswim8 antibody (1600-1700 aa) (STJ11106056)

STJ11106056

GENERAL INFORMATION

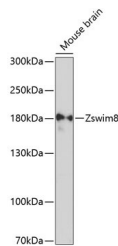
Product Type	Primary antibodies
Short Description	
Applications	WB/ELISA
Host/Source	Rabbit
Reactivity	Mouse

PRODUCT PROPERTIES

Clonality	Polyclonal
Clone ID	
Concentration	Lot specific
Conjugation	Unconjugated
Purification	Affinity purification
Dilution Range	WB:1:500-1:2000 ELISA:Recommended starting concentration is 1 Mu g/mL. Please optimize the concentration based on your specific assay requirements.
Formulation	PBS with 0.02% Sodium Azide, 50% Glycerol, pH 7.3.
Isotype	IgG
Storage	
Instruction	

TARGET INFORMATION

Gene ID	268721
Gene Symbol	Zswim8
Uniprot ID	ZSWM8_MOUSE
Immunogen	
Immunogen Region	1600-1700 aa
Specificity	A synthetic peptide corresponding to a sequence within amino acids 1600-1700 of mouse Zswim8 (NP_082272.1).
Immunogen Sequence	PLPTSVALSSVHPASTFPAL QGASLPALTTPSPPLVSGGF PPPEEETHSQPVNPHSLHHL HAAYRVGMLALEMLGRRRAHN DHPNFRSRPPYTDDVKWLL G



Western blot analysis of lysates from mouse brain, using Zswim8 Rabbit pAb (STJ11106056) at 1:3000 dilution.
Secondary antibody: HRP-conjugated Goat anti-Rabbit IgG (H+L) (STJS000856) at 1:10000 dilution.
Lysates/proteins: 25 Mu g per lane.
Blocking buffer: 3% nonfat dry milk in TBST.
Detection: ECL Basic Kit.
Exposure time: 90s.

This product is suitable for in-vitro studies under the RESEARCH USE ONLY [RUO] licence. This product must not be used as for diagnostic or other medical purposes.
St John's Laboratory Ltd, Knowledge Dock Business Centre, University Way, London, E16 2RD | Tel: 0208 223 3081