

Anti-ENHO antibody (1-76 aa) (STJ11106043)

STJ11106043

GENERAL INFORMATION

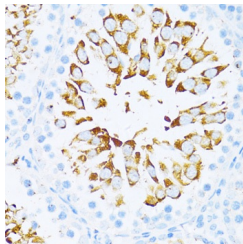
Product Type	Primary antibodies
Short Description	
Applications	IHC-P/ELISA
Host/Source	Rabbit
Reactivity	Mouse/Rat

PRODUCT PROPERTIES

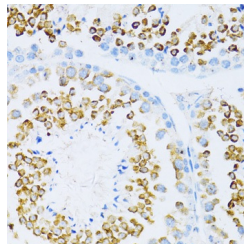
Clonality	Polyclonal
Clone ID	
Concentration	Lot specific
Conjugation	Unconjugated
Purification	Affinity purification
Dilution Range	IHC-P:1:50-1:200 ELISA:Recommended starting concentration is 1 Mu g/mL. Please optimize the concentration based on your specific assay requirements.
Formulation	PBS with 0.02% Sodium Azide, 50% Glycerol, pH 7.3.
Isotype	IgG
Storage Instruction	

TARGET INFORMATION

Gene ID	375704
Gene Symbol	ENHO
Uniprot ID	ENHO_HUMAN
Immunogen	
Immunogen Region	1-76 aa
Specificity	A synthetic peptide corresponding to a sequence within amino acids 1-76 of human ENHO (NP_940975.2).
Immunogen Sequence	MGAAISQGALIAIVCNGLVG FLLLLLWILCWACHSRSD VDSLSESSPNSSPGPCPEKA PPPQKPSHEGSYLLQP



Immunohistochemistry analysis of paraffin-embedded Rat testis using ENHO Rabbit pAb (STJ11106043) at dilution of 1:100 (40x lens). Microwave antigen retrieval performed with 0.01M PBS Buffer (pH 7.2) prior to immunohistochemistry staining.



Immunohistochemistry analysis of paraffin-embedded Mouse testis using ENHO Rabbit pAb (STJ11106043) at dilution of 1:100 (40x lens). Microwave antigen retrieval performed with 0.01M PBS Buffer (pH 7.2) prior to immunohistochemistry staining.

This product is suitable for in-vitro studies under the RESEARCH USE ONLY [RUO] licence. This product must not be used as for diagnostic or other medical purposes.
St John's Laboratory Ltd, Knowledge Dock Business Centre, University Way, London, E16 2RD | Tel: 0208 223 3081