

## Anti-C17orf74 antibody (1-100 aa) (STJ11106030)

STJ11106030

### GENERAL INFORMATION

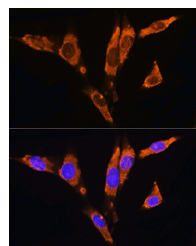
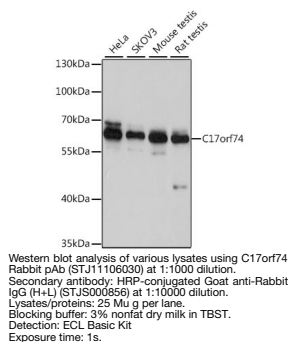
<b>Product Type</b>	Primary antibodies
<b>Short Description</b>	
<b>Applications</b>	WB/IF/ICC/ELISA
<b>Host/Source</b>	Rabbit
<b>Reactivity</b>	Human/Mouse/Rat

### PRODUCT PROPERTIES

<b>Clonality</b>	Polyclonal
<b>Clone ID</b>	
<b>Concentration</b>	Lot specific
<b>Conjugation</b>	Unconjugated
<b>Purification</b>	Affinity purification
<b>Dilution Range</b>	WB:1:500-1:2000 IF/ICC:1:50-1:200 ELISA:Recommended starting concentration is 1 Mu g/mL. Please optimize the concentration based on your specific assay requirements.
<b>Formulation</b>	PBS with 0.01% Thimerosal, 50% Glycerol, pH 7.3.
<b>Isotype</b>	IgG
<b>Storage</b>	
<b>Instruction</b>	

### TARGET INFORMATION

<b>Gene ID</b>	201243
<b>Gene Symbol</b>	SPEM2
<b>Uniprot ID</b>	SPEM2_HUMAN
<b>Immunogen</b>	
<b>Immunogen Region</b>	1-100 aa
<b>Specificity</b>	A synthetic peptide corresponding to a sequence within amino acids 1-100 of human C17orf74 (NP_783861.3). MENQLWHNTVRCNQQYQESP HDAEDILLGLLGLVNLVIG INVATMMWHGLQNALDKMID WATQKNEIQASESPPSGPPD
<b>Immunogen Sequence</b>	KAQDVHIHCILDPVQVKMSR



Immunofluorescence analysis of NIH/3T3 cells using C17orf74 Rabbit pAb (STJ11106030) at dilution of 1:100. Secondary antibody: Cy3-conjugated Goat anti-Rabbit IgG (H+L) (STJS001166) at 1:500 dilution. Blue: DAPI for nuclear staining.

This product is suitable for in-vitro studies under the RESEARCH USE ONLY [RUO] licence. This product must not be used as for diagnostic or other medical purposes.  
St John's Laboratory Ltd, Knowledge Dock Business Centre, University Way, London, E16 2RD | Tel: 0208 223 3081