

Anti-ABCA4 antibody (110-300 aa) (STJ11105939)

STJ11105939

GENERAL INFORMATION

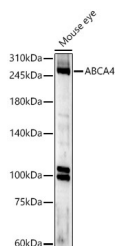
Product Type	Primary antibodies
Short Description	
Applications	WB/ELISA
Host/Source	Rabbit
Reactivity	Human/Mouse/Rat

PRODUCT PROPERTIES

Clonality	Polyclonal
Clone ID	
Concentration	Lot specific
Conjugation	Unconjugated
Purification	Affinity purification
Dilution	WB: 1:100-1:500
Range	ELISA: Recommended starting concentration is 1 µg/mL. Please optimize the concentration based on your specific assay requirements.
Formulation	PBS with 0.09% Sodium Azide, 50% Glycerol, pH 7.3.
Isotype	IgG
Storage	
Instruction	

TARGET INFORMATION

Gene ID	24
Gene Symbol	ABCA4
Uniprot ID	ABCA4_HUMAN
Immunogen	
Immunogen Region	110-300 aa
Specificity	Recombinant fusion protein containing a sequence corresponding to amino acids 110-300 of human ABCA4 (NP_000341.2).
Immunogen Sequence	QELLMNAPESQHLGRIWTEL HILSQFMDTLRTHPERIAGR GIRIRDILKDEETLTLFLIK NIGLSDSVVYLLINSQVRPE QFAHGVPDLALKDIACSEAL LERFIIFSQRRAKTVRYAL CSLSQGTQLQWIEDTYANVD FFKLFRVLPTLLDSRSQGIN LRSWGILSDMSPRIQEFIH RPSMQDLLWVT



Western blot analysis of lysates from Mouse eye, using ABCA4 Rabbit pAb (STJ11105939) at 1:500 dilution. Secondary antibody: HRP-conjugated Goat anti-Rabbit IgG (H+L) (STJ5000856) at 1:10000 dilution. Lysates/proteins: 25 µg per lane. Blocking buffer: 3% nonfat dry milk in TBST. Detection: ECL Basic Kit. Exposure time: 90s.

This product is suitable for in-vitro studies under the RESEARCH USE ONLY [RUO] licence. This product must not be used as for diagnostic or other medical purposes.
St John's Laboratory Ltd, Knowledge Dock Business Centre, University Way, London, E16 2RD | Tel: 0208 223 3081