

## Anti-GSDMD antibody (Full Length + N-Term) (STJ11105919)

STJ11105919

### GENERAL INFORMATION

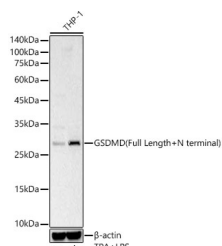
|                          |                    |
|--------------------------|--------------------|
| <b>Product Type</b>      | Primary antibodies |
| <b>Short Description</b> |                    |
| <b>Applications</b>      | WB/IF/ICC/ELISA    |
| <b>Host/Source</b>       |                    |
| <b>Reactivity</b>        | Human/Mouse/Rat    |

### PRODUCT PROPERTIES

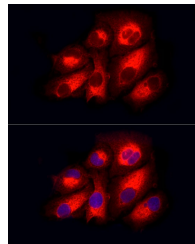
|                            |  |
|----------------------------|--|
| <b>Clonality</b>           | Polyclonal   |
| <b>Clone ID</b>            |  |
| <b>Concentration</b>       | Lot specific   |
| <b>Conjugation</b>         | Unconjugated   |
| <b>Purification</b>        | Affinity purification  |
| <b>Dilution Range</b>      | WB:1:100-1:500<br>IF/ICC:1:50-1:200<br>ELISA:Recommended starting concentration is 1 Mu g/mL. Please optimize the concentration based on your specific assay requirements. |
| <b>Formulation</b>         | PBS with 0.05% Proclin300, 50% Glycerol, pH 7.3.   |
| <b>Isotype</b>             | IgG  |
| <b>Storage Instruction</b> |  |

### TARGET INFORMATION

|                           |  |
|---------------------------|--|
| <b>Gene ID</b>            | 79792  |
| <b>Gene Symbol</b>        | GSDMD  |
| <b>Uniprot ID</b>         | GSDMD_HUMAN  |
| <b>Immunogen</b>          |  |
| <b>Immunogen Region</b>   | Full Length + N-Term   |
| <b>Specificity</b>        | Recombinant fusion protein containing a sequence corresponding to amino acids 80-163 of mouse Cleaved GSDMD (NP_081236.1). |
| <b>Immunogen Sequence</b> | SFKVSDVVDGNIQGRVMSG MGEKGISGGAAVSDSSASM NVCILRVQTQKTWETMQHERH LQQPENKILQQLRSRGDDL F VVTE                                   |



Western blot analysis of lysates from THP-1 cells, using GSDMD (Full Length+N terminal) Rabbit pAb (STJ11105919) at 1:400 dilution. THP-1 cells were treated by PMA/TPA (80 nM) at 37 °C for overnight and LPS (1 Mu g/ml) at 37 °C for 6 hours. Secondary antibody: HRP-conjugated Goat anti-Rabbit IgG (H+L) (STJS000856) at 1:10000 dilution. Lysates/proteins: 25 Mu g per lane. Blocking buffer: 3% nonfat dry milk in TBST. Detection: ECL Basic Kit. Exposure time: 1s.



Western blot analysis of lysates from wild type (WT) and 293T transfected with GSDMD-N using GSDMD (Full Length+N terminal) (STJ11105919) at 1:2000 dilution. Secondary antibody: HRP-conjugated Goat anti-Rabbit IgG (H+L) (STJS000856) at 1:10000 dilution. Lysates/proteins: 25 Mu g per lane. Blocking buffer: 3% nonfat dry milk in TBST. Detection: ECL Basic Kit. Exposure time: 1s.

This product is suitable for in-vitro studies under the RESEARCH USE ONLY [RUO] licence. This product must not be used as for diagnostic or other medical purposes.  
St John's Laboratory Ltd, Knowledge Dock Business Centre, University Way, London, E16 2RD | Tel: 0208 223 3081