

Anti-Phospho-MRE11-Ser676 antibody (STJ11105909)

STJ11105909

GENERAL INFORMATION

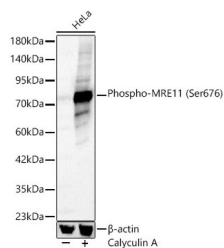
Product Type	Primary antibodies
Short Description	
Applications	WB
Host/Source	Rabbit
Reactivity	Human

PRODUCT PROPERTIES

Clonality	Polyclonal
Clone ID	
Concentration	Lot specific
Conjugation	Unconjugated
Purification	Affinity purification
Dilution Range	WB:1:500-1:1000
Formulation	PBS with 0.05% Proclin300, 50% Glycerol, pH 7.3.
Isotype	IgG
Storage Instruction	Store at -20°C for up to 1 year from the date of receipt, and avoid repeat freeze-thaw cycles.

TARGET INFORMATION

Gene ID	4361
Gene Symbol	MRE11
Uniprot ID	MRE11_HUMAN
Immunogen	IMSQS
Immunogen Region	
Specificity	A synthetic phosphorylated peptide around S676 of human MRE11 (NP_005582.1).
Immunogen Sequence	IMSQS



Western blot analysis of lysates from HeLa cells using Phospho-MRE11 (Ser676) Rabbit polyclonal antibody (STJ11105909) at a 1:800 dilution. HeLa cells were treated by Calyculin A (200 nM) at 37 °C for 18 hours after serum-starvation overnight. Secondary antibody: HRP-Goat Anti-Rabbit IgG (H+L) (STJ/S000856) at 1:10000 dilution. Lysates/proteins: 25 µg per lane. Blocking buffer: 3% nonfat dry milk in TBST. Detection: ECL Basic Kit. Exposure time: 1 s.

This product is suitable for in-vitro studies under the RESEARCH USE ONLY [RUO] licence. This product must not be used as for diagnostic or other medical purposes.
St John's Laboratory Ltd, Knowledge Dock Business Centre, University Way, London, E16 2RD | Tel: 0208 223 3081