

Anti-Phospho-RIPK1-S166 antibody [S5896RM] (STJ11105896)

STJ11105896

GENERAL INFORMATION

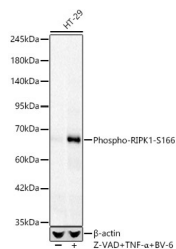
Product Type	Primary antibodies
Short Description	
Applications	WB/ELISA
Host/Source	Rabbit
Reactivity	Human

PRODUCT PROPERTIES

Clonality	Monoclonal
Clone ID	S5896RM
Concentration	Lot specific
Conjugation	Unconjugated
Purification	Affinity purification
Dilution Range	WB:1:2000-1:5000 ELISA:Recommended starting concentration is 1 µg/mL. Please optimize the concentration based on your specific assay requirements.
Formulation	PBS with 0.05% Proclin300, 0.05% BSA, 50% Glycerol, pH 7.3.
Isotype	IgG
Storage Instruction	Store at -20°C for up to 1 year from the date of receipt, and avoid repeat freeze-thaw cycles.

TARGET INFORMATION

Gene ID	8737
Gene Symbol	RIPK1
Uniprot ID	RIPK1_HUMAN
Immunogen	MWSKLN
Immunogen Region	
Specificity	A synthetic phosphorylated peptide around S166 of human RIPK1 (NP_003795.2).
Immunogen Sequence	MWSKLN



Western blot analysis of HT-29 cells, using Phospho-RIPK1-S166 Rabbit monoclonal antibody (STJ11105896) at 1:4000 dilution. HT-29 cells were treated with Z-VAD (50µM), human TNF-Alpha (50ng/ml) and BV-6 (200nM) at 37 °C for 5 hour. Secondary antibody: HRP Goat Anti-Rabbit IgG (H+L) (STJS000856) at 1:10000 dilution. Lysates/proteins: 25µg per lane. Blocking buffer: 3% nonfat dry milk in TBST. Detection: ECL Basic Kit. Exposure time: 30s.

This product is suitable for in-vitro studies under the RESEARCH USE ONLY [RUO] licence. This product must not be used as for diagnostic or other medical purposes.
St John's Laboratory Ltd, Knowledge Dock Business Centre, University Way, London, E16 2RD | Tel: 0208 223 3081