

Anti-Phospho-ATF-2/ATF-7-Thr69/71-Thr51/53 antibody (STJ11105884)

STJ11105884

GENERAL INFORMATION

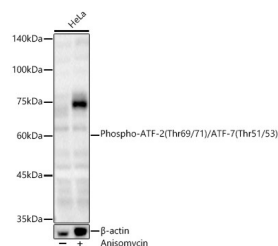
Product Type	Primary antibodies
Short Description	
Applications	WB/ELISA
Host/Source	Rabbit
Reactivity	Human

PRODUCT PROPERTIES

Clonality	Polyclonal
Clone ID	
Concentration	Lot specific
Conjugation	Unconjugated
Purification	Affinity purification
Dilution Range	WB:1:500-1:1000 ELISA:Recommended starting concentration is 1 Mu g/mL. Please optimize the concentration based on your specific assay requirements.
Formulation	PBS with 0.05% Proclin300, 50% Glycerol, pH 7.3.
Isotype	IgG
Storage Instruction	Store at -20°C for up to 1 year from the date of receipt, and avoid repeat freeze-thaw cycles.

TARGET INFORMATION

Gene ID	1386 11016
Gene Symbol	ATF2 ATF7
Uniprot ID	ATF2_HUMAN ATF7_HUMAN
Immunogen	
Immunogen Region	
Specificity	A synthetic phosphorylated peptide around Thr69/71 and Thr51/53 of human Phospho-ATF-2/ATF-7.
Immunogen Sequence	



Western blot analysis of HeLa, using Phospho-ATF-2 (Thr69/71) /ATF-7 (Thr51/53) Rabbit polyclonal antibody (STJ11105884) at 1:600 dilution. HeLa cells were treated by Anisomycin (25 Mu g/mL) at 37 °C for 30 minutes after serum-starvation overnight. Secondary antibody: HRP Goat Anti-Rabbit IgG (H+L) (STJS000856) at 1:10000 dilution. Lysates/proteins: 25 Mu g per lane. Blocking buffer: 3% nonfat dry milk in TBST. Detection: ECL Basic Kit. Exposure time: 90s.

This product is suitable for in-vitro studies under the RESEARCH USE ONLY [RUO] licence. This product must not be used as for diagnostic or other medical purposes.
St John's Laboratory Ltd, Knowledge Dock Business Centre, University Way, London, E16 2RD | Tel: 0208 223 3081