

Anti-Phospho-SMAD5-S465 antibody [S5872RM] (STJ11105872)

STJ11105872

GENERAL INFORMATION

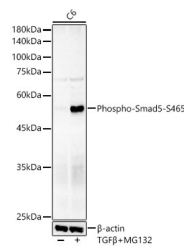
Product Type	Primary antibodies
Short Description	
Applications	WB/ELISA
Host/Source	Rabbit
Reactivity	Mouse/Rat

PRODUCT PROPERTIES

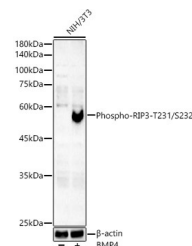
Clonality	Monoclonal
Clone ID	S5872RM
Concentration	Lot specific
Conjugation	Unconjugated
Purification	Affinity purification
Dilution Range	WB:1:1000-1:5000 ELISA:Recommended starting concentration is 1 Mu g/mL. Please optimize the concentration based on your specific assay requirements.
Formulation	PBS with 0.05% Proclin300, 0.05% BSA, 50% Glycerol, pH 7.3.
Isotype	IgG
Storage Instruction	Store at -20°C for up to 1 year from the date of receipt, and avoid repeat freeze-thaw cycles.

TARGET INFORMATION

Gene ID	4090
Gene Symbol	SMAD5
Uniprot ID	SMAD5_HUMAN
Immunogen	
Immunogen Region	
Specificity	A synthetic phosphorylated peptide around S465 of human Smad5.
Immunogen Sequence	



Western blot analysis of C6, using Phospho-Smad5-S465 Rabbit monoclonal antibody (STJ11105872) at 1:2000 dilution. C6 cells were treated by MG132 (50 Mu M) and TGF Beta at 37 °C for 90 minutes. Secondary antibody: HRP Goat Anti-Rabbit IgG (H+L) (STJS000856) at 1:10000 dilution. Lysates/proteins: 25 Mu g per lane. Blocking buffer: 3% nonfat dry milk in TBST. Detection: ECL Basic Kit. Exposure time: 180s.



Western blot analysis of NIH/3T3, using Phospho-Smad5-S465 Rabbit monoclonal antibody (STJ11105872) at 1:2000 dilution. NIH/3T3 cells were treated by BMP4 (50ng/ml) at 37 °C for 6 hours. Secondary antibody: HRP Goat Anti-Rabbit IgG (H+L) (STJS000856) at 1:10000 dilution. Lysates/proteins: 25 Mu g per lane. Blocking buffer: 3% nonfat dry milk in TBST. Detection: ECL Basic Kit. Exposure time: 180s.

This product is suitable for in-vitro studies under the RESEARCH USE ONLY [RUO] licence. This product must not be used as for diagnostic or other medical purposes.
St John's Laboratory Ltd, Knowledge Dock Business Centre, University Way, London, E16 2RD | Tel: 0208 223 3081