

Anti-Phospho-PKC alpha + PKC beta II-T638-T641 antibody [S5852RM] (STJ11105852)

STJ11105852

GENERAL INFORMATION

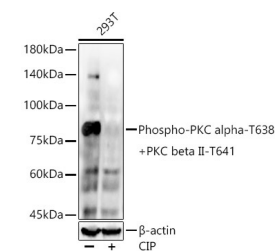
Product Type	Primary antibodies
Short Description	
Applications	WB/ELISA
Host/Source	Rabbit
Reactivity	Human

PRODUCT PROPERTIES

Clonality	Monoclonal
Clone ID	S5852RM
Concentration	Lot specific
Conjugation	Unconjugated
Purification	Affinity purification
Dilution Range	WB:1:2000-1:7000 ELISA:Recommended starting concentration is 1 Mu g/mL. Please optimize the concentration based on your specific assay requirements.
Formulation	PBS with 0.05% Proclin300, 0.05% BSA, 50% Glycerol, pH 7.3.
Isotype	IgG
Storage Instruction	Store at -20°C for up to 1 year from the date of receipt, and avoid repeat freeze-thaw cycles.

TARGET INFORMATION

Gene ID	5579 5578
Gene Symbol	PRKCB PRKCA
Uniprot ID	KPCB_HUMAN KPCA_HUMAN
Immunogen	
Immunogen Region	
Specificity	A synthetic phosphorylated peptide around T638 of human PRKCA (NP_002728.2).
Immunogen Sequence	



Western blot analysis of extracts from 293T cells, using Phospho-PKC alpha-T638 + PKC beta II-T641 Rabbit monoclonal antibody (STJ11105852) at 1:5000 dilution. 293T cells were treated by CIP (20 Mu L/400 Mu L) at 37 A°C for 1 hour. Secondary antibody: HRP Goat Anti-Rabbit IgG (H+L) (STJ5000856) at 1:10000 dilution. Lysates/proteins: 25 Mu g per lane. Blocking buffer: 3% nonfat dry milk in TBST. Detection: ECL Enhanced Kit. Exposure time: 60s.

This product is suitable for in-vitro studies under the RESEARCH USE ONLY [RUO] licence. This product must not be used as for diagnostic or other medical purposes.
St John's Laboratory Ltd, Knowledge Dock Business Centre, University Way, London, E16 2RD | Tel: 0208 223 3081