

Anti-Phospho-STING1-S366 antibody [S5849RM] (STJ11105849)

STJ11105849

GENERAL INFORMATION

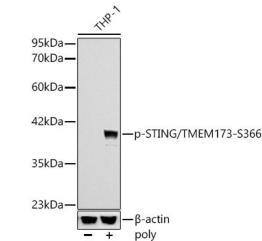
Product Type	Primary antibodies
Short Description	
Applications	WB/ELISA
Host/Source	Rabbit
Reactivity	Human

PRODUCT PROPERTIES

Clonality	Monoclonal
Clone ID	S5849RM
Concentration	Lot specific
Conjugation	Unconjugated
Purification	Affinity purification
Dilution Range	WB:1:500-1:1000 ELISA:Recommended starting concentration is 1 μ g/mL. Please optimize the concentration based on your specific assay requirements.
Formulation	PBS with 0.09% Sodium Azide, 0.05% BSA, 50% Glycerol, pH 7.3.
Isotype	IgG
Storage Instruction	Store at -20°C for up to 1 year from the date of receipt, and avoid repeat freeze-thaw cycles.

TARGET INFORMATION

Gene ID	340061
Gene Symbol	STING1
Uniprot ID	STING_HUMAN
Immunogen	LISGM
Immunogen Region	
Specificity	A synthetic phosphorylated peptide around S366 of human STING1 (NP_938023.1).
Immunogen Sequence	LISGM



Western blot analysis of THP-1, using Phospho-STING/TMEM173-S366 antibody (STJ11105849) at 1:1000 dilution. THP-1 cells were transfected with poly (dA:dT) (5 μ g/mL) for 3 hours. Secondary antibody: HRP-Goat Anti-Rabbit IgG (H+L) (STJ5000856) at 1:10000 dilution. Lysates/proteins: 25 μ g per lane. Blocking buffer: 3% nonfat dry milk in TBST. Detection: ECL Basic Kit. Exposure time: 10s.

This product is suitable for in-vitro studies under the RESEARCH USE ONLY [RUO] licence. This product must not be used as for diagnostic or other medical purposes.
St John's Laboratory Ltd, Knowledge Dock Business Centre, University Way, London, E16 2RD | Tel: 0208 223 3081