

Anti-Phospho-PLCG1-Y783 antibody [S5829RM] (STJ11105829)

STJ11105829

GENERAL INFORMATION

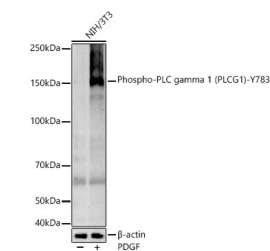
Product Type	Primary antibodies
Short Description	
Applications	WB/ELISA
Host/Source	Rabbit
Reactivity	Mouse

PRODUCT PROPERTIES

Clonality	Monoclonal
Clone ID	S5829RM
Concentration	Lot specific
Conjugation	Unconjugated
Purification	Affinity purification
Dilution Range	WB:1:1000-1:5000 ELISA:Recommended starting concentration is 1 μ g/mL. Please optimize the concentration based on your specific assay requirements.
Formulation	PBS with 0.05% Proclin300, 0.05% BSA, 50% Glycerol, pH 7.3.
Isotype	IgG
Storage Instruction	Store at -20°C for up to 1 year from the date of receipt, and avoid repeat freeze-thaw cycles.

TARGET INFORMATION

Gene ID	5335
Gene Symbol	PLCG1
Uniprot ID	PLCG1_HUMAN
Immunogen	GFYVE
Immunogen Region	
Specificity	A synthetic phosphorylated peptide around Y783 of human Phospho-PLC gamma 1 (PLCG1)-Y783 (NP_877963.1).
Immunogen Sequence	GFYVE



Western blot analysis of various lysates, using Phospho-PLC gamma 1 (PLCG1)-Y783 antibody (STJ11105829) at 1:2000 dilution. NIH/3T3 cells were treated by PDGF (100 ng/ml) at 37 °C for 30 minutes after serum-starvation overnight. Secondary antibody: HRP Goat Anti-Rabbit IgG (H+L) (STJSD00856) at 1:10000 dilution. Lysates/proteins: 25 μ g per lane. Blocking buffer: 3% nonfat dry milk in TBST. Detection: ECL Basic Kit. Exposure time: 60s.

This product is suitable for in-vitro studies under the RESEARCH USE ONLY [RUO] licence. This product must not be used as for diagnostic or other medical purposes.
St John's Laboratory Ltd, Knowledge Dock Business Centre, University Way, London, E16 2RD | Tel: 0208 223 3081