

Anti-Phospho-RELA-S536 antibody [S5807RM] (STJ11105807)

STJ11105807

GENERAL INFORMATION

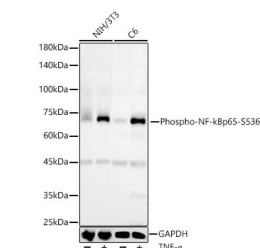
Product Type	Primary antibodies
Short Description	
Applications	WB/ELISA
Host/Source	Rabbit
Reactivity	Human/Mouse/Rat

PRODUCT PROPERTIES

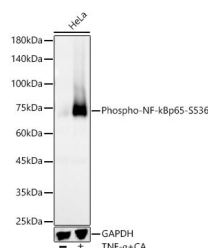
Clonality	Monoclonal
Clone ID	S5807RM
Concentration	Lot specific
Conjugation	Unconjugated
Purification	Affinity purification
Dilution Range	WB:1:10000-1:20000 ELISA:Recommended starting concentration is 1 μ g/mL. Please optimize the concentration based on your specific assay requirements.
Formulation	PBS with 0.09% Sodium Azide, 0.05% BSA, 50% Glycerol, pH 7.3.
Isotype	IgG
Storage Instruction	Store at -20°C for up to 1 year from the date of receipt, and avoid repeat freeze-thaw cycles.

TARGET INFORMATION

Gene ID	5970
Gene Symbol	RELA
Uniprot ID	TF65_HUMAN
Immunogen	FSSIA
Immunogen Region	
Specificity	A synthetic phosphorylated peptide around S536 of human Phospho-NF- κ B p65/RelA-S536 (NP_068810.3).
Immunogen Sequence	FSSIA



Western blot analysis of various lysates, using Phospho-NF- κ B p65/RelA-S536 Rabbit monoclonal antibody (STJ11105807) at 1:2000 dilution. NIH/3T3 and C6 were treated by TNF- α at 37 $^{\circ}$ C for 30 minutes after serum-starvation overnight. Secondary antibody: HRP Goat Anti-Rabbit IgG (H+L) (STJ5000856) at 1:10000 dilution. Lysates/proteins: 25 μ g per lane. Blocking buffer: 3% nonfat dry milk in TBST. Detection: ECL Basic Kit. Exposure time: 60s.



Western blot analysis of lysates from HeLa cells, using Phospho-NF- κ B p65/RelA-S536 Rabbit monoclonal antibody (STJ11105807) at 1:2000 dilution. HeLa cells were treated by 100ng/mL TNF- α + 50nM CA at 37 $^{\circ}$ C for 30 minutes after serum-starvation overnight. Secondary antibody: HRP Goat Anti-Rabbit IgG (H+L) (STJ5000856) at 1:10000 dilution. Lysates/proteins: 25 μ g per lane. Blocking buffer: 3% nonfat dry milk in TBST. Detection: ECL Basic Kit. Exposure time: 10s.

This product is suitable for in-vitro studies under the RESEARCH USE ONLY [RUO] licence. This product must not be used as for diagnostic or other medical purposes.
St John's Laboratory Ltd, Knowledge Dock Business Centre, University Way, London, E16 2RD | Tel: 0208 223 3081