

Anti-Phospho-STING1-S366 antibody (STJ11105801)

STJ11105801

GENERAL INFORMATION

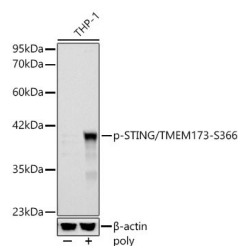
Product Type	Primary antibodies
Short Description	
Applications	WB/ELISA
Host/Source	Rabbit
Reactivity	Human

PRODUCT PROPERTIES

Clonality	Polyclonal
Clone ID	
Concentration	Lot specific
Conjugation	Unconjugated
Purification	Affinity purification
Dilution Range	WB:1:500-1:1000 ELISA:Recommended starting concentration is 1 µg/mL. Please optimize the concentration based on your specific assay requirements.
Formulation	PBS with 0.05% Proclin300, 50% Glycerol, pH 7.3.
Isotype	IgG
Storage Instruction	Store at -20°C for up to 1 year from the date of receipt, and avoid repeat freeze-thaw cycles.

TARGET INFORMATION

Gene ID	340061
Gene Symbol	STING1
Uniprot ID	STING_HUMAN
Immunogen	LISGME
Immunogen Region	
Specificity	A synthetic phosphorylated peptide around S366 of human STING/TMEM173 (NP_938023.1).
Immunogen Sequence	LISGME



Western blot analysis of lysates from THP-1 cells using Anti-Phospho-STING/TMEM173-S366 Rabbit pAb (STJ11105801) at 1:500 dilution. THP-1 cells were differentiated with TPA (200 nM) for 15 minutes and transfected with poly (dAdT) (5 µg/mL) for 3 hours. Secondary antibody: HRP-conjugated Goat anti-Rabbit IgG (H+L) (STJS000856) at 1:10000 dilution. Lysates/proteins: 25 µg per lane. Blocking buffer: 3% nonfat dry milk in TBST. Detection: ECL Enhanced Kit. Exposure time: 30s.

This product is suitable for in-vitro studies under the RESEARCH USE ONLY [RUO] licence. This product must not be used as for diagnostic or other medical purposes.
St John's Laboratory Ltd, Knowledge Dock Business Centre, University Way, London, E16 2RD | Tel: 0208 223 3081