

Anti-Rabbit IgG isotype control antibody [S5763RM] (STJ11105763)
STJ11105763

GENERAL INFORMATION

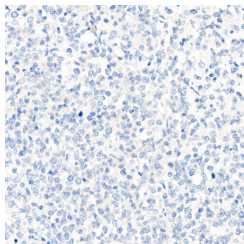
Product Type	Primary antibodies
Short Description	
Applications	IHC-P/IF/ICC/IP/FC/ChIP
Host/Source	Rabbit
Reactivity	

PRODUCT PROPERTIES

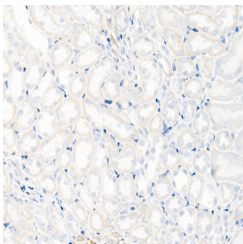
Clonality	Monoclonal
Clone ID	S5763RM
Concentration	Lot specific
Conjugation	Unconjugated
Purification	Protein A/G purification
Dilution Range	IHC-P:1:50-1:200 IF/ICC:1:50-1:200 IP:0.5 Mu g-4 Mu g antibody for 200 Mu g-400 Mu g extracts of whole cells FC:1:50-1:200 ChIP:3 Mu g antibody for 10 Mu g-15 Mu g of Chromatin
Formulation	PBS with 0.05% Proclin300, 0.05% BSA, 50% Glycerol, pH 7.3.
Isotype	IgG
Storage Instruction	Store at -20°C for up to 1 year from the date of receipt, and avoid repeat freeze-thaw cycles.

TARGET INFORMATION

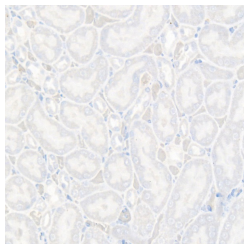
Gene ID	
Gene Symbol	
Uniprot ID	
Immunogen	
Immunogen Region	
Specificity	None
Immunogen Sequence	



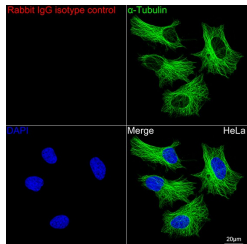
Immunohistochemistry analysis of paraffin-embedded Human tonsil using Rabbit IgG isotype control (STJ11105763) at dilution of 1:100 (40x lens). High pressure antigen retrieval performed with 0.01M Citrate Buffer (pH 6.0) prior to immunohistochemistry staining.



Immunohistochemistry analysis of paraffin-embedded Mouse kidney using Rabbit IgG isotype control (STJ11105763) at dilution of 1:100 (40x lens). High pressure antigen retrieval performed with 0.01M Citrate Buffer (pH 6.0) prior to immunohistochemistry staining.



Immunohistochemistry analysis of paraffin-embedded Rat kidney using Rabbit IgG isotype control (STJ11105763) at dilution of 1:100 (40x lens). High pressure antigen retrieval performed with 0.01M Citrate Buffer (pH 6.0) prior to immunohistochemistry staining.



Confocal imaging of HeLa cells using Rabbit IgG isotype control (STJ11105763, dilution 1:200) followed by a further incubation with Cy3 Goat Anti-Rabbit IgG (H+L) (STJS001166, dilution 1:500) (Red). The cells were counterstained with Alpha-Tubulin Mouse mAb (STJ11107556, dilution 1:400) followed by incubation with ABFluor 488-conjugated Goat Anti-Mouse IgG (H+L) antibody (STJS001209, dilution 1:500) (Green). DAPI was used for nuclear staining (Blue). Objective: 100x.