

Anti-ADRA1A antibody (150-250) [S5756RM] (STJ11105756)

STJ11105756

GENERAL INFORMATION

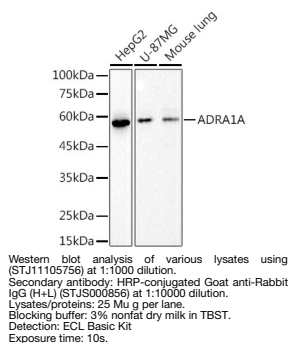
| | |
|--------------------------|--------------------|
| Product Type | Primary antibodies |
| Short Description | |
| Applications | WB/ELISA |
| Host/Source | Rabbit |
| Reactivity | Human/Mouse |

PRODUCT PROPERTIES

| | |
|----------------------------|--|
| Clonality | Monoclonal |
| Clone ID | S5756RM |
| Concentration | Lot specific |
| Conjugation | Unconjugated |
| Purification | Affinity purification |
| Dilution Range | WB:1:500-1:1000 ELISA:Recommended starting concentration is 1 Mu g/mL. Please optimize the concentration based on your specific assay requirements. |
| Formulation | PBS with 0.02% Sodium Azide, 0.05% BSA, 50% Glycerol, pH 7.3. |
| Isotype | IgG |
| Storage Instruction | Store at -20°C for up to 1 year from the date of receipt, and avoid repeat freeze-thaw cycles. |

TARGET INFORMATION

| | |
|---------------------------|--|
| Gene ID | 148 |
| Gene Symbol | ADRA1A |
| Uniprot ID | ADA1A_HUMAN |
| Immunogen | |
| Immunogen Region | 150-250 |
| Specificity | A synthetic peptide corresponding to a sequence within amino acids 150-250 of human ADRA1A (P35348). |
| Immunogen Sequence | VWALSLSVISIGPLFGWRQPA PEDETICQINEEPGYVLFSA LGSFYLPALAILVMYCRVYV VAKRESRGLKSGDKTKSDS EQVTLRIHRKNAPAGSGMA S |



This product is suitable for in-vitro studies under the RESEARCH USE ONLY [RUO] licence. This product must not be used as for diagnostic or other medical purposes.
St John's Laboratory Ltd, Knowledge Dock Business Centre, University Way, London, E16 2RD | Tel: 0208 223 3081