

Anti-UCP1 antibody (100-200) (STJ11105727)

STJ11105727

GENERAL INFORMATION

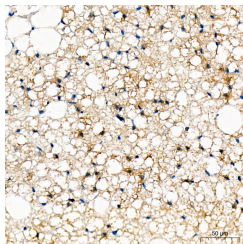
Product Type	Primary antibodies
Short Description	
Applications	WB/IHC-P/ELISA
Host/Source	Rabbit
Reactivity	Human/Mouse/Rat

PRODUCT PROPERTIES

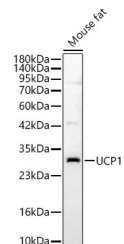
Clonality	Polyclonal
Clone ID	
Concentration	Lot specific
Conjugation	Unconjugated
Purification	Affinity purification
Dilution Range	WB:1:1000-1:5000 IHC-P:1:50-1:200 ELISA:Recommended starting concentration is 1 µg/mL. Please optimize the concentration based on your specific assay requirements.
Formulation	PBS with 0.05% Proclin300, 50% Glycerol, pH 7.3.
Isotype	IgG
Storage Instruction	Store at -20°C for up to 1 year from the date of receipt, and avoid repeat freeze-thaw cycles.

TARGET INFORMATION

Gene ID	7350
Gene Symbol	UCP1
Uniprot ID	UCP1_HUMAN
Immunogen	
Immunogen Region	100-200
Specificity	A synthetic peptide corresponding to a sequence within amino acids 100-200 of human UCP1 (NP_068605.1).
Immunogen Sequence	QEFLTAGKETAPSLGSKILA GLTTGGVAVFIGQPTVEVKV RLQAQSHLHGKIPRYGTYN AYRIATTEGLTGLWKGTTTP NLMRSVIINCTELVTYDLMK E



Immunohistochemistry analysis of UCP1 in paraffin-embedded rat brown adipose tissue using UCP1 Rabbit polyclonal antibody (STJ11105727) at a dilution of 1:200 (40x lens). High pressure antigen retrieval was performed with 0.01 M citrate buffer (pH 6.0) prior to immunohistochemistry staining.



Western blot analysis of lysates from Mouse fat, using UCP1 Rabbit polyclonal antibody (STJ11105727) at 1:2000 dilution. Secondary antibody: HRP Goat Anti-Rabbit IgG (H+L) (STJS000856) at 1:10000 dilution. Lysates/proteins: 25µg per lane. Blocking buffer: 3% nonfat dry milk in TBST. Detection: ECL Basic Kit. Exposure time: 180s.