

Anti-Histone H3 antibody (1-136) (STJ11105725)

STJ11105725

GENERAL INFORMATION

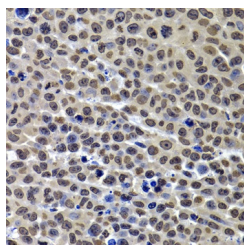
Product Type	Primary antibodies
Short Description	
Applications	WB/IHC-P/ELISA
Host/Source	Rabbit
Reactivity	Human/Mouse/Rat/Other

PRODUCT PROPERTIES

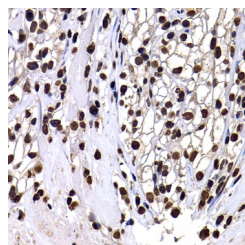
Clonality	Polyclonal
Clone ID	
Concentration	Lot specific
Conjugation	Unconjugated
Purification	Affinity purification
Dilution	WB:1:500-1:2000
Range	IHC-P:1:50-1:200
	ELISA:Recommended starting concentration is 1 Mu g/mL. Please optimize the concentration based on your specific assay requirements.
Formulation	PBS with 0.02% Sodium Azide, 50% Glycerol, pH 7.3.
Isotype	IgG
Storage Instruction	Store at -20°C for up to 1 year from the date of receipt, and avoid repeat freeze-thaw cycles.

TARGET INFORMATION

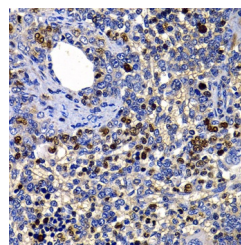
Gene ID	8290
	8350/8351/8352/8353/8354/8355/8356/8357/8358/8968
Gene Symbol	H3-4
	H3C1.H3C2.H3C3.H3C4.H3C6.
Uniprot ID	H31T_HUMAN
	H31_HUMAN
Immunogen	
Immunogen Region	1-136
Specificity	Recombinant fusion protein containing a sequence corresponding to amino acids 1-136 of human HIST1H3D (NP_003520.1).
Immunogen Sequence	MARTKQTARKSTGGKAPRKQ LATKAARKSAPATGGVKKPH RYRPGTVLREIRRYQKSTE LLIRKLFPQRLVREIAQDFK TDLRFQSSAVMALQEACEAY LVGLFEDTNLCAIHAKRVTI MPKDIQLARRIRGERA



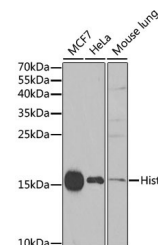
Immunohistochemistry analysis of Histone H3 in paraffin-embedded mouse cancer using Histone H3 Rabbit polyclonal antibody (STJ11105725) at dilution of 1:100 (40x lens). Perform microwave antigen retrieval with 10 mM PBS buffer pH 7.2 before commencing with immunohistochemistry staining protocol.



Immunohistochemistry analysis of Histone H3 in paraffin-embedded human kidney cancer using Histone H3 Rabbit polyclonal antibody (STJ11105725) at dilution of 1:100 (40x lens). Perform microwave antigen retrieval with 10 mM PBS buffer pH 7.2 before commencing with immunohistochemistry staining protocol.



Immunohistochemistry analysis of Histone H3 in paraffin-embedded rat spleen using Histone H3 Rabbit polyclonal antibody (STJ11105725) at dilution of 1:100 (40x lens). Perform microwave antigen retrieval with 10 mM PBS buffer pH 7.2 before commencing with immunohistochemistry staining protocol.



Western blot analysis of various lysates using Histone H3 Rabbit polyclonal antibody (STJ11105725) at 1:1000 dilution. Secondary antibody: HRP Goat Anti-Rabbit IgG (H+L) (STJSD00856) at 1:10000 dilution. Lysates/proteins: 25 Mu g per lane. Blocking buffer: 3% nonfat dry milk in TBST. Detection: ECL Enhanced Kit. Exposure time: 30s.

This product is suitable for in-vitro studies under the RESEARCH USE ONLY [RUO] licence. This product must not be used as for diagnostic or other medical purposes.

St John's Laboratory Ltd, Knowledge Dock Business Centre, University Way, London, E16 2RD | Tel: 0208 223 3081